



CORKART

INTERIORS

2014 COLLECTION

WELCOME HOME





CORKART INTERIORS

In the art of crafting, our mindset is always between aesthetics and function.

Our ultimate goal: a great design with great personality. We offer high quality products which provides you contemporary look with amazing comfort. Cork fabrics are, proudly, within our product core, allowing our products to reflect our own identity and roots heritage. Our cork knowledge goes back in time 3 generations, so we can share our experience and dedication within the cork process.

We are inspired by cork and want to inspire you by our products as much by our thinking. Corkart Interiors truly believe that each simple detail can make a difference improving your way of life.

Welcome Home!



ANTONIETA | COMPORTA

ANTONIETA

has such a noble and majestic presence and doesn't like to go easily unnoticed. If you have a taste for detail, you will love her. Timeless style is within her nature. She is naturally romantic and always spreads her charm wherever she is.



ANTONIETA | NAZARÉ



ANTONIETA | TAVIRA

AMÉLIA

Intense, strong and loves confort above all. Has an independent and imposing personality, taking control of the surroundings. No space is too big for her. Amélia fills the environment even if she is only by herself.



AMÉLIA | NAZARÉ



AMÉLIA | BALEAL



AMÉLIA | CORDOAMA



BEATRIZ

Sophisticated and modern. Beatriz adapts harmoniously to all kind of environments. She's confident and gives confidence to space. Her simple lines and simple structure makes atmosphere more calm and authentic.



BIATRIZ | CORDOAMA



BIATRIZ | ARRIFANA



BEATRIZ | TAVIRA



MATILDE | ARRIFANA

MATILDE

is spontaneous and delicate.
She's versatile and she easily adapts to any kind of
environment. In case you're in Matilde's presence,
you may just smile and go with the flow...
Why complicate when everything can be so simple?



MATILDE | NAZARE



MATILDE | BALEAL





MARIA | GUINCHO

MARIA

Classic and sensible with a touch of simplicity. She's passionate and independent but always likes a nice company. Maria is all about elegance. Her round shapes are distinguish and makes her unique.



MARIA | COMPORTA



MARIA | CORDOAMA

CONSTANÇA

She balance the energy of any given space.
Her minimalist lines brings harmony into your environment.
She reflects what is essencial in nature and it easily turns a grey area into a living and clean room.



CONSTANÇA | BALEAL



CONSTANÇA | NAZARÉ



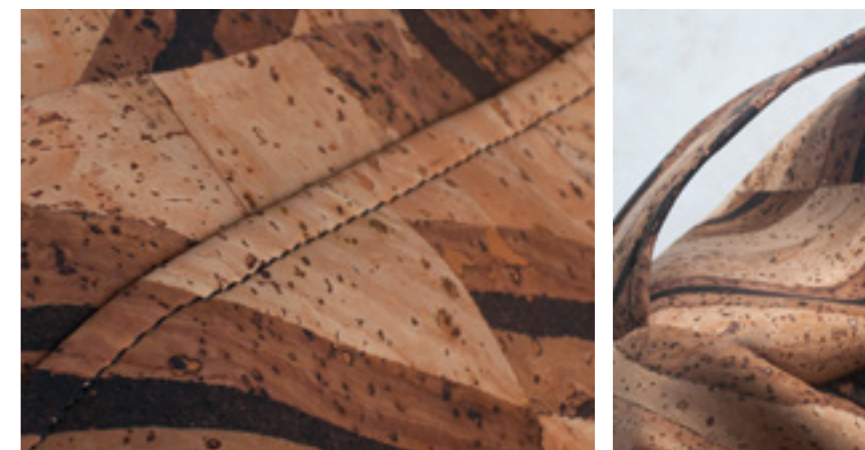
CONSTANÇA | CORDOAMA



CARLOTA | GUINCHO

CARLOTA

Relaxed and a bit clumsy. The day-to-day is to live sorely.
She has rebel personality and definitely can't stand monotony.
Carlota like changes. Moving is a way of life.
So funny, isn't she?!



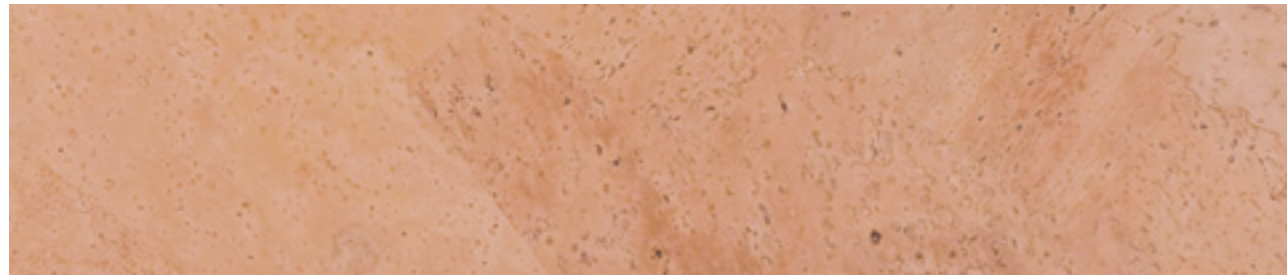
CARLOTA | NAZARÉ



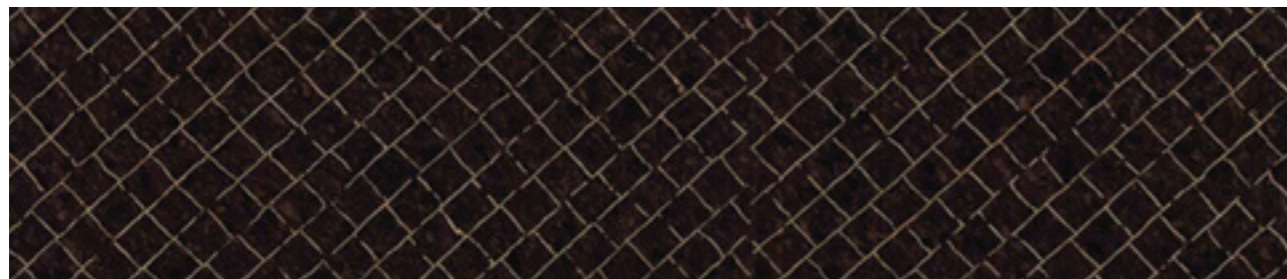
CARLOTA | ARRIFANA

FABRICS

Corkart Interiors is proud to use Portuguese cork, hand picked.
Cork fabric is made of natural cork and handcrafted.
The raw material has strength and unusual durability.
All patterns are original with unique design.



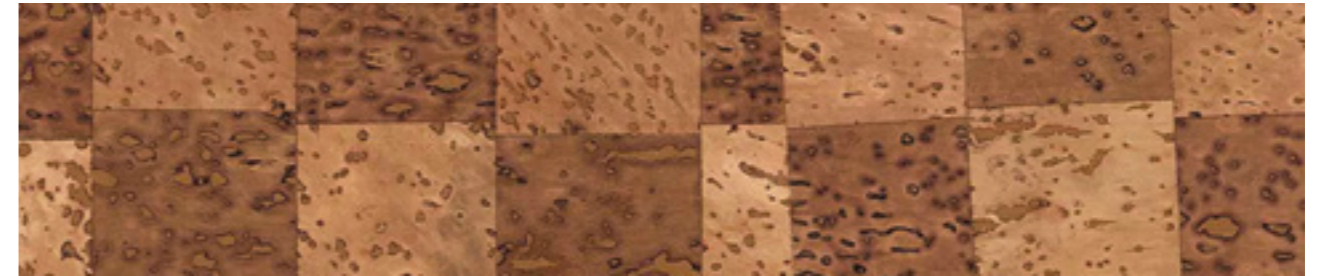
NAZARÉ



ARRIFANA



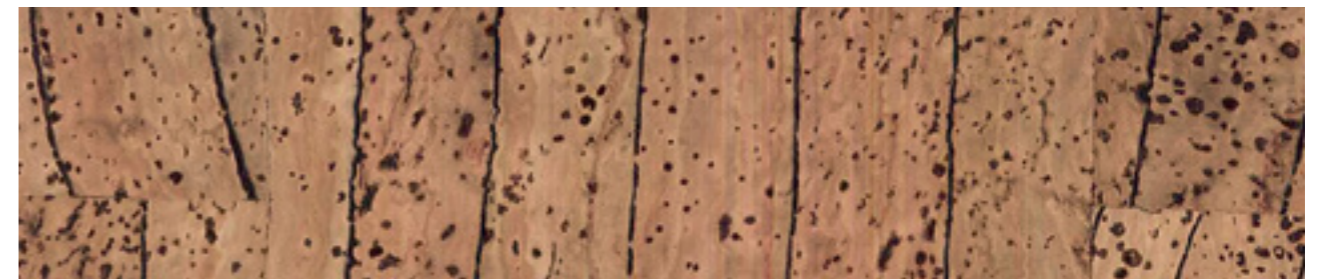
GUINCHO



TAVIRA



COMPORTA



CORDOAMA



BALEAL



ANTONIETA

Structure: Solid Beech wood. **Finishing:** matte polyurethane. **Back/Seat:** Sanglatex Headbangs, 40mm RB foam (rubber type), 10mm foam covering. **Back:** 30mm 4ORB, 10mm foam covering. **L** 67cm x **A** 100cm x **C** 62cm



MARIA

Structure: Solid Beech wood. **Finishing:** matte polyurethane. **Back/Seat:** 15mm 60hr plate with foam. **L** 46cm x **A** 82cm x **C** 56cm



AMÉLIA

Structure: Solid Beech wood. **Finishing:** matte polyurethane. **Back/Seat:** Sanglatex Headbangs, 50mm RB foam (rubber type) 10mm foam covering. **Back:** Sanglatex Headbangs, 30mm 4ORB, 10mm foam covering. **L** 57cm x **A** 88cm x **C** 66cm



CONSTANÇA

Legs: 16mm x 2mm square tube steel metallic structure. **Finishing:** polyester powder coating. **Seat:** 12,5mm 100% Beech wood in plywood structure, High strength polyurethane lacquering. **Back:** upholstery. **Seat:** matte polyurethane **L** 42cm x **A** 82cm x **C** 50cm



BEATRIZ

Structure: Solid Beech wood. **Finishing:** matte polyurethane. **Back/Seat:** Sanglatex Headbangs, 50mm RB foam (rubber type), 10mm foam covering. **Back:** Headbangs, 30mm 4ORB, 10mm foam covering. **L** 50cm x **A** 97cm x **C** 63cm



MATILDE

Structure: 16mm x 2mm round tube steel metallic structure. **Finishing:** polyester powder coating. **Back/Seat:** upholstery **L** 40cm x **A** 85cm x **C** 52cm



CARLOTA

Back: Foam **A** 100cm x **R** 66cm

IMPORTANT INFORMATION

Our products are handmade, thus every piece is unique and patterns may change from the examples shown. Cork contains organic pigments. Just like any other wood product, cork will fade and should never be exposed directly to sunlight. In case of sunlight exposure, to avoid uneven fading we recommend to change chair's position often. Differences in fabric's tone, or changes in the structure of wood grain are specific to material type and can not be guaranteed or controlled during production. Do not place hot objects on fabric nor wood surfaces. In case of solid wood structure, small cracks are possible to happen in extreme cases and should not be considered as a defect.

PRODUCT CARE

We recommend product CARE for cleaning and maintenance of chairs. With a dry and clean cloth, apply evenly on cork fabric for better strength and durability.

All lacquered and metallic surfaces can be cleaned only with water through a dry cloth to remove any particle of dust or other abrasive material. Do not use solvents or any kind of abrasives materials.





Parque Industrial Vendas Novas,
Lote 20 . 7080-341 Vendas Novas · Portugal
Tel.: +351 265 809 215/16 . Fax: +351 265 809 217
geral@corkartinteriors.pt . www.corkartinteriors.pt

