



SDX – Abstract



Technical characteristics

Structure:	1/10 cut pile	Number of tufts:	157.480 / m ²
Colours:	5	Back:	Actionbac
Pile materials:	100% polyamide, SDX	Fire behaviour:	Cfl-s1
Pile weight:	1200 gr/m ²	Usage class:	33
Total weight:	2500 gr/m ²	Width:	400 cm
Pile height:	7 mm	Extra:	Bleach-resistant UV and stain-resistant 100% colourfast
Total height:	10 mm		

Available colours



200



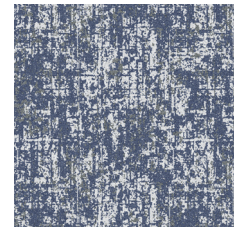
600



760



790



900