



ROCKEFELLER COLLECTION



BROOKLYN BRIDGE



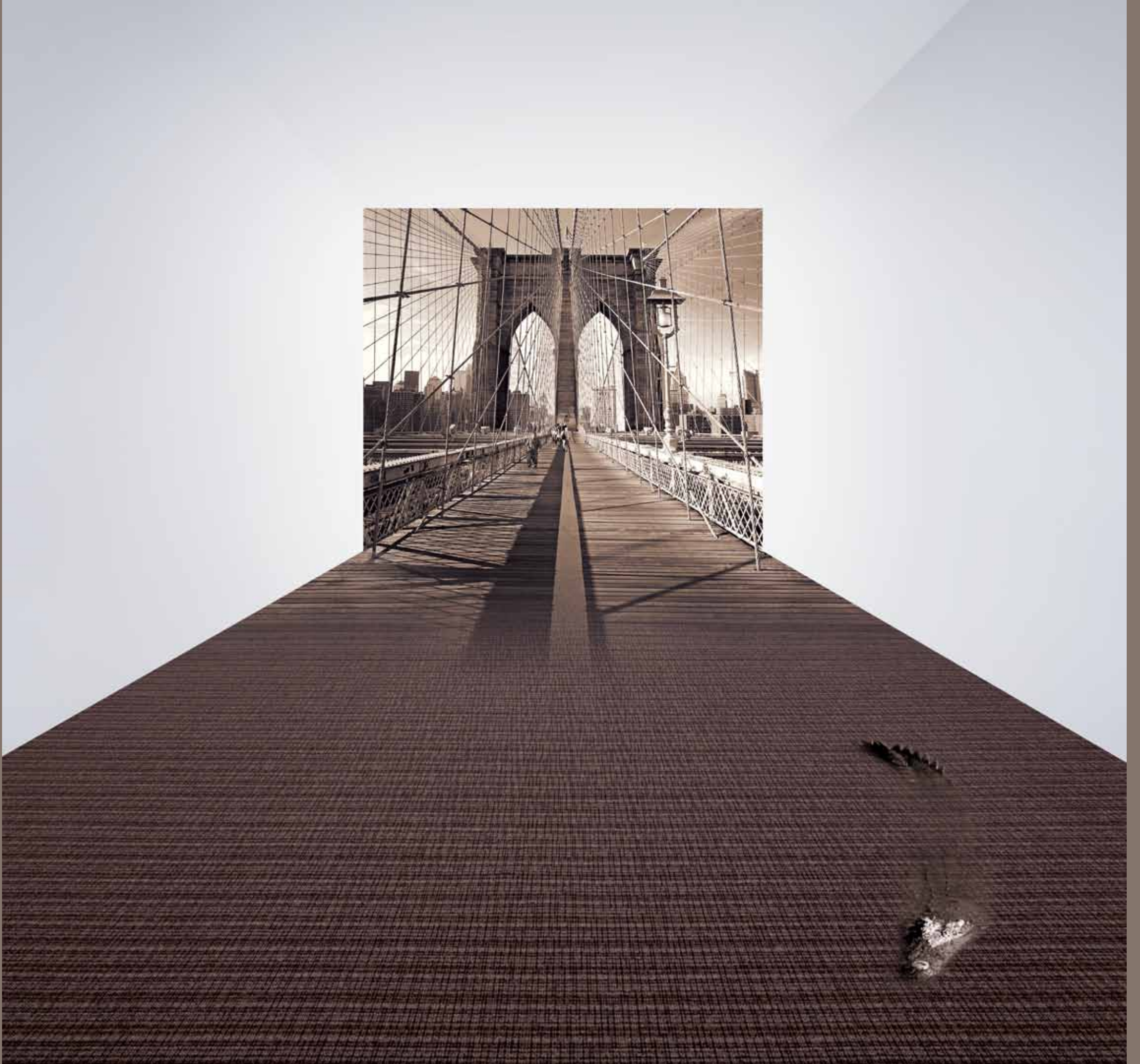
CENTRAL PARK



GREENWICH VILLAGE



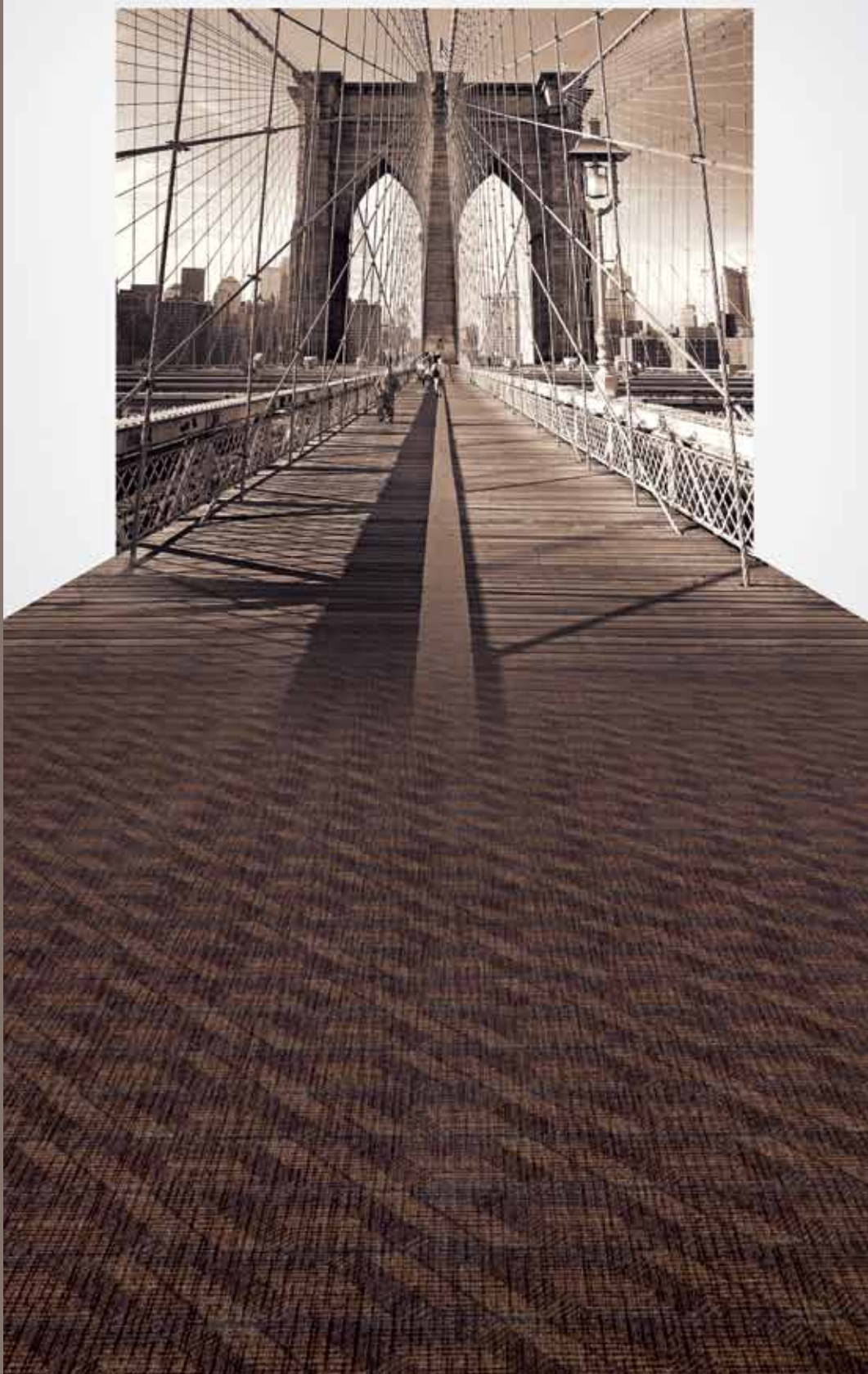
LONG ISLAND



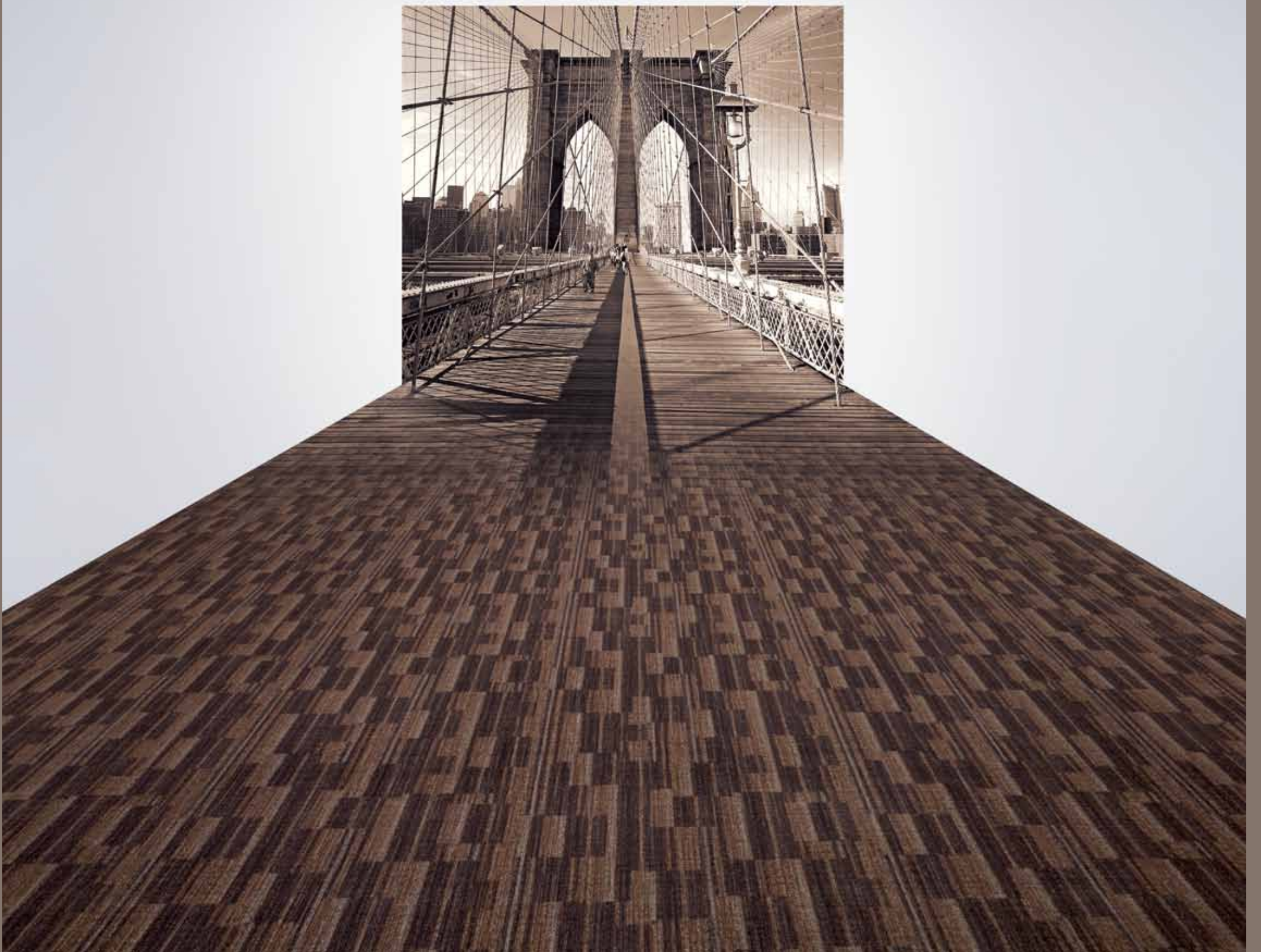
RF1 990

BROOKLYN BRIDGE

BROOKLYN BRIDGE



RF2 990

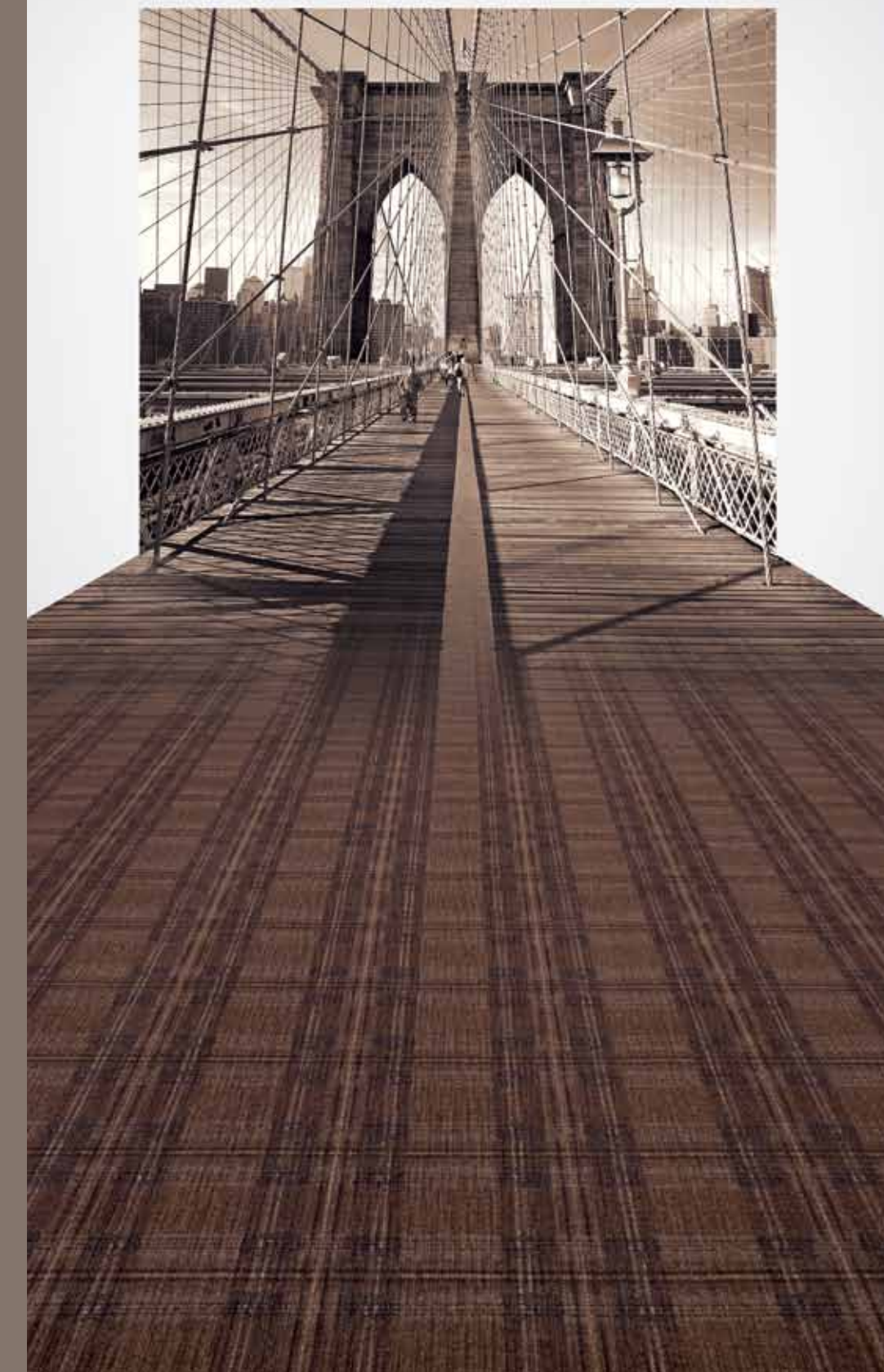


RF3 990



BROOKLYN BRIDGE

BROOKLYN BRIDGE



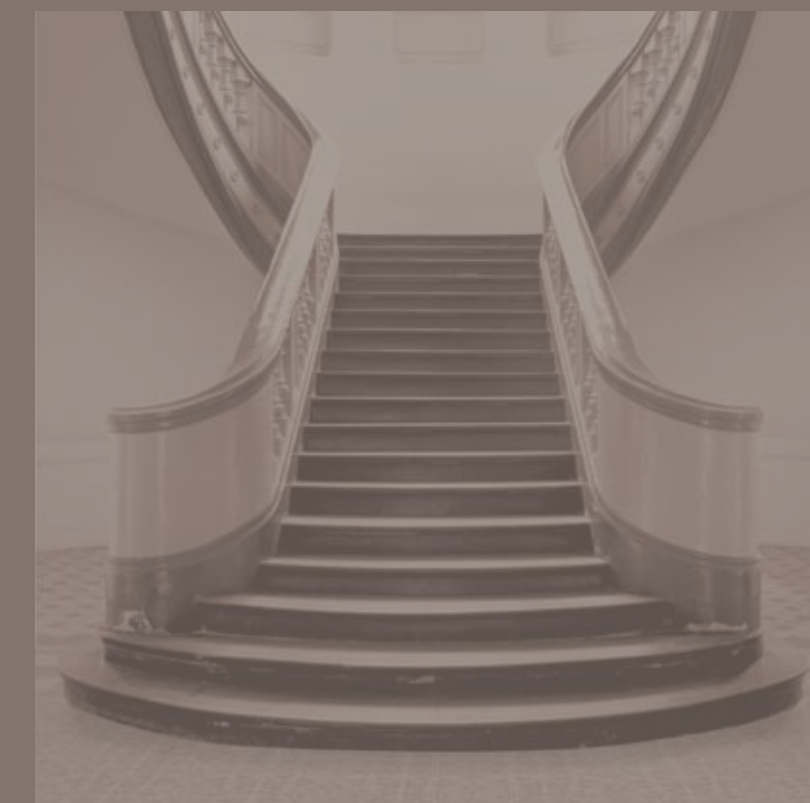
RF4 990



BROOKLYN BRIDGE



CENTRAL PARK



GREENWICH VILLAGE



LONG ISLAND



RF5 303



RF5 312



RF5 332

CENTRAL PARK



RF6 303



RF6 312



RF6 332



RF7 303



RF7 312



RF7 332



BROOKLYN BRIDGE



CENTRAL PARK



GREENWICH VILLAGE



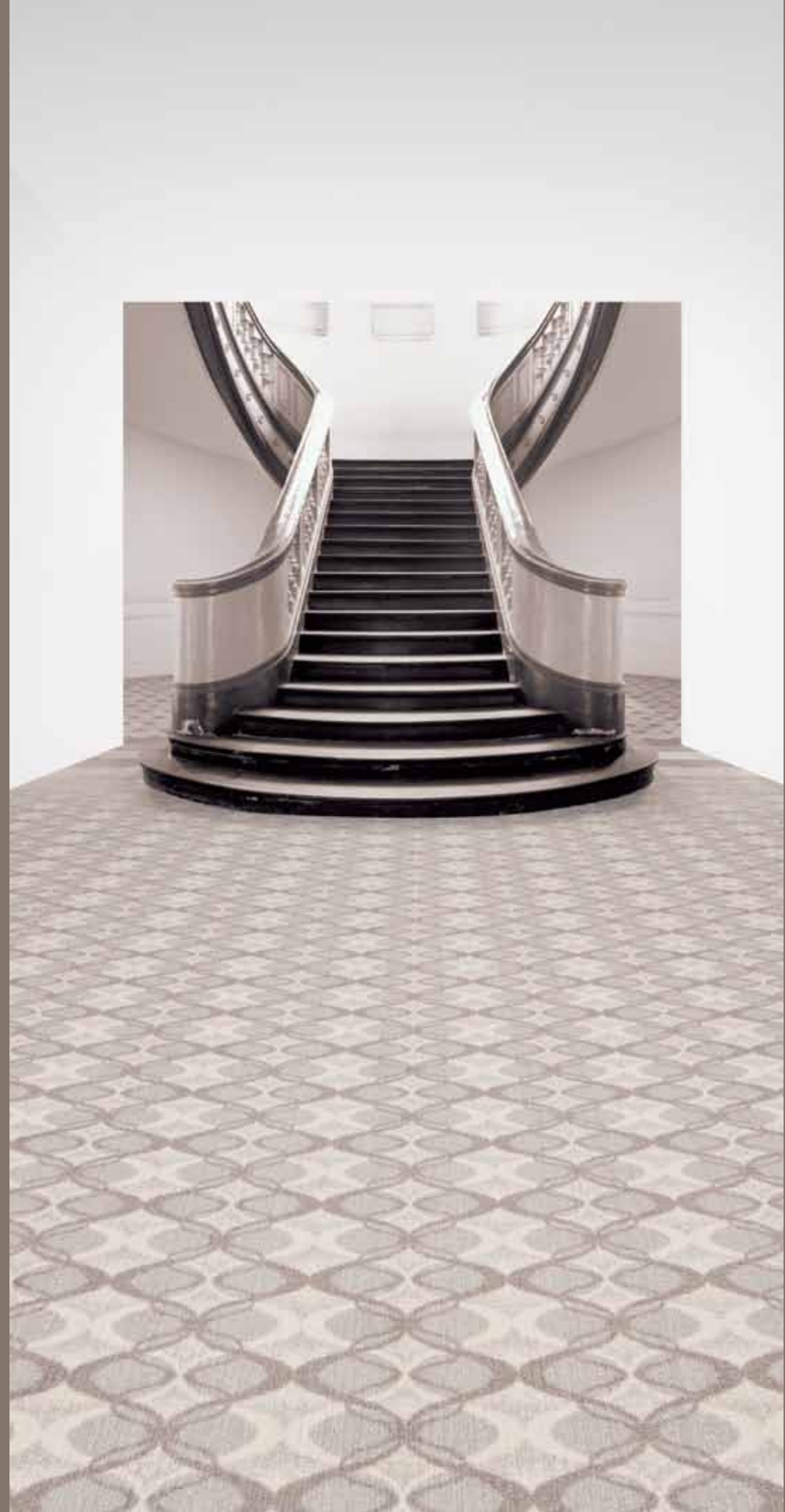
LONG ISLAND



RF8 312



RF8 151





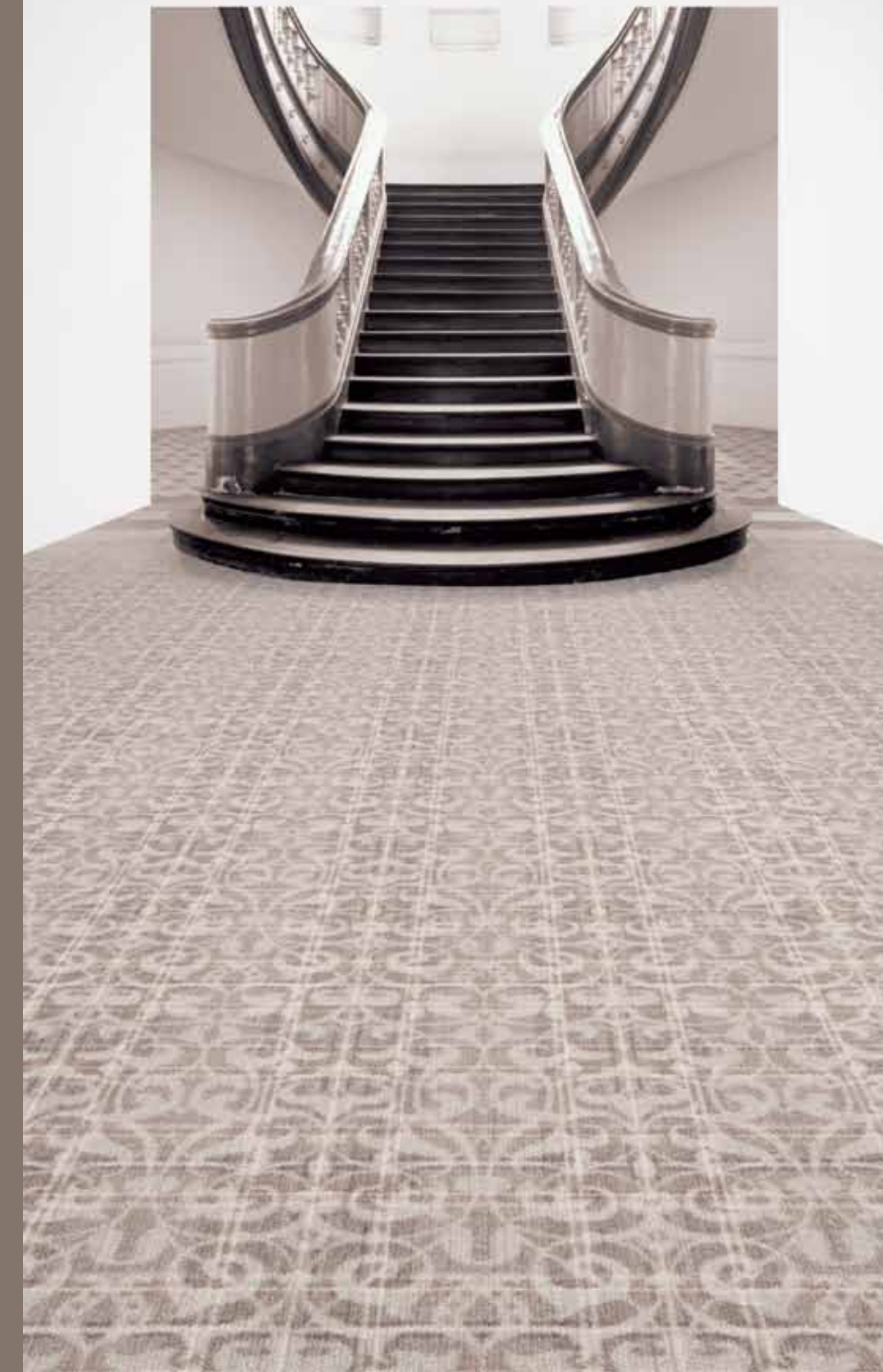
RF5 303



RF5 151



RF9 151





BROOKLYN BRIDGE



CENTRAL PARK



GREENWICH VILLAGE



LONG ISLAND



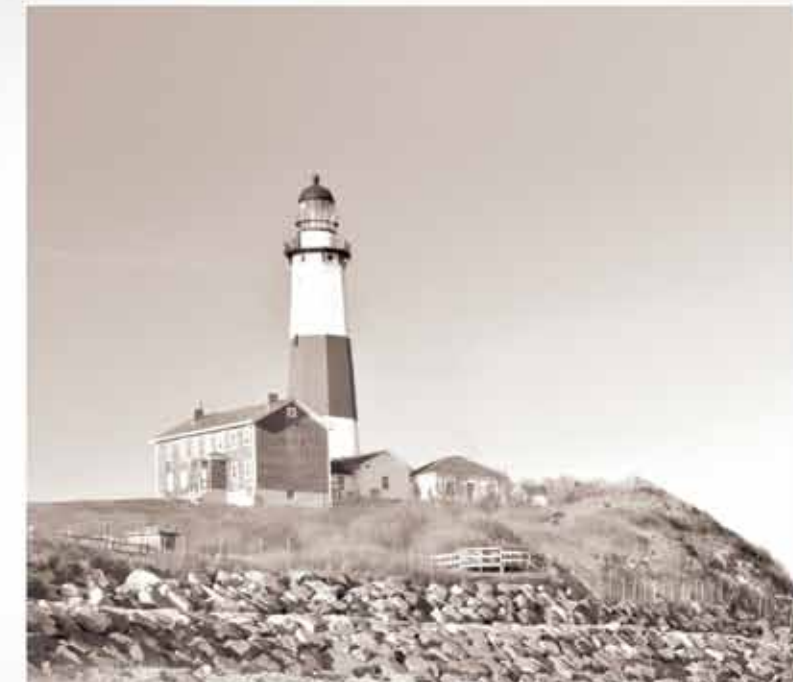
RF10 303



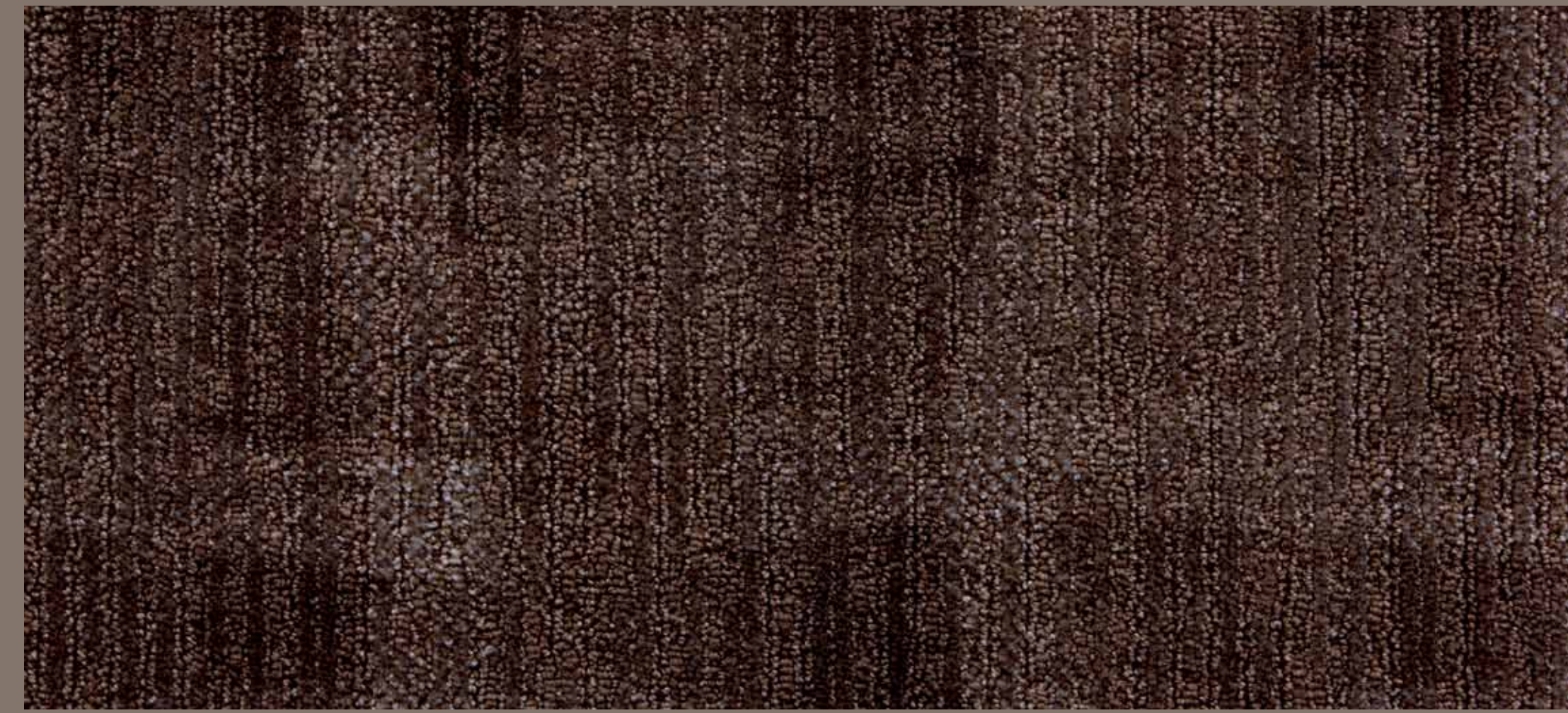
RF10 312



RF10 151



RF11 151



RF11 332

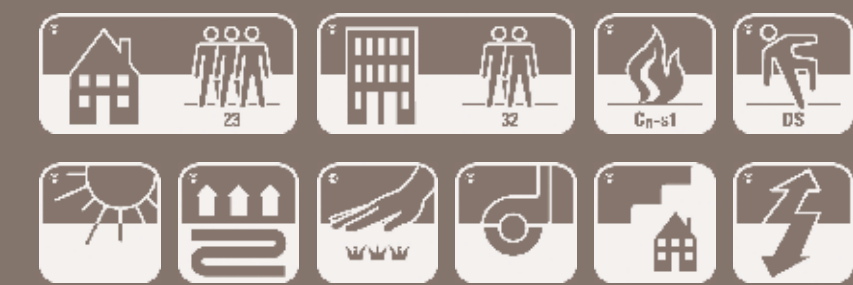


RF6 151



TECHNICAL DETAILS

Manufacturing technique	1/10 Graphics Loop	Herstellungstechnik	1/10 Graphics Loop	Technique de fabrication	1/10 Graphics Loop
Pile composition	100% PA Luxus 2-ply	Material der Nutzschicht	100% PA Luxus 2-ply	Composition du velours	100% PA Luxus 2-ply
Secondary backing	Cosyback	Rückenausstattung	Cosyback	Dossier	Cosyback
Width	400cm	Breite	400cm	Largeur	400cm
Roll length	25m	Rollenlänge	25m	Longeur du rouleau	25m
Pile height	7mm	Polhöhe	7mm	Hauteur du velours	7mm
Pile weight	1050g/m ²	Polgewicht	1050g/m ²	Poids du velours	1050g/m ²
Total height	9mm	Gesamthöhe	9mm	Hauteur totale	9mm
Total weight	2000g/m ²	Gesamtgewicht	2000g/m ²	Poids total	2000g/m ²
Number of tufts	196850/m ²	Noppenzahl	196850/m ²	Nombre de points	196850/m ²
Fastness to rubbing (dry)	ISO 105 X12 4-5	Reibechtheit (trocken)	ISO 105 X12 4-5	Solidité au frottement (sec)	ISO 105 X12 4-5
Fastness to rubbing (wet)	ISO 105 X12 4-5	Reibechtheit (nass)	ISO 105 X12 4-5	Solidité au frottement (humide)	ISO 105 X12 4-5
Water fastness	ISO 105 E01 4-5	Wasserechtheit	ISO 105 E01 4-5	Solidité à l'eau	ISO 105 E01 4-5
Fastness to light	ISO 105 B2 6	Lichtechtheit	ISO 105 B2 6	Solidité à la lumière	ISO 105 B2 6
Thermal resistance	ISO 8302 0,1 m ² K/W	Wärmedurchlasswiderstand	ISO 8302 0,1 m ² K/W	Résistance thermique	ISO 8302 0,1 m ² K/W
Impact sound insulation	ISO 140 - 8 29 dB	Trittschalldämmung	ISO 140 - 8 29 dB	Réduction de la transmission du bruit de choc	ISO 140 - 8 29 dB
Fire behaviour	EN13501-1 Cf1-s1	Brennverhalten	EN13501-1 Cf1-s1	Comportement au feu	EN13501-1 Cf1-s1



OVERVIEW

BROOKLYN BRIDGE



RF1 990



RF2 990



RF3 990



RF4 990

CENTRAL PARK



RF5 303



RF6 303



RF7 303



RF5 312



RF6 312



RF7 312



RF5 332



RF6 332



RF7 332

GREENWICH VILLAGE



RF5 303



RF8 312



RF5 151



RF8 151



RF9 151

LONG ISLAND



RF10 303



RF10 312



RF10 151



RF10 151



RF6 151



RF11 151

Pattern repeat – Rapport du dessin - Rapport	
RF 1:	↑15 →15
RF 2:	↑66 →66
RF 3:	↑66 →66
RF 4:	↑50 →50
RF 5:	↑66 →66
RF 6:	↑100 →100
RF 7:	↑66 →66
RF 8:	↑25 →25
RF 9:	↑33 →33
RF 10:	↑100 →100
RF 11:	↑33 →33

Dimensions pictures: 15 x 12 cm – Dimensions photos: 15 x 12 cm – Maße Fotos: 15 x 12 cm

OVERVIEW

