

# CONTRACT CARPETS





# INDEX

04	<b>COMPANY</b>
06	<b>SERVICE</b>
08	<b>OPTIONAL TREATMENTS</b>
10	<b>GRAPHICS</b>
40	<b>AXMINSTER</b>
72	<b>PRINTED</b>
98	<b>TILES</b>
102	<b>RUGS</b>
	122 - <b>CUSTOM MADE   CRETA</b>
	130 - <b>CUSTOM MADE   EXTREME</b>
136	<b>PORTFOLIO</b>
138	<b>TECHNICAL</b>
	<b>INFORMATION</b>





# COMPANY

## LUSOTUFO

Encompassing more than 75 years of experience and expertise, Lusotufo is the largest floorcovering group in the Iberian Peninsula and is capable of developing and supporting a wealth of solutions in the decorative market. Its core business is focused in the field of wall to wall carpet, rugs, sisal, synthetic laminate flooring and decorative fabrics.

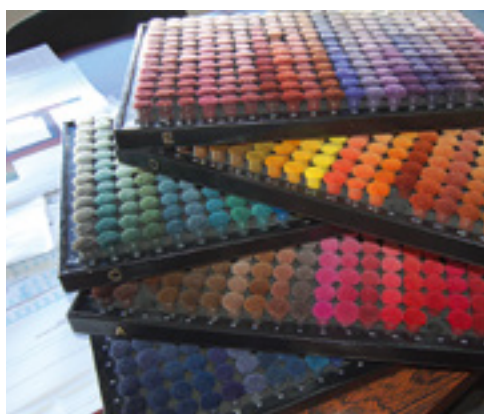


75 years  
providing solutions

Our vast collection provides a quality solution for a variety of styles and tastes incorporating a combination of materials, textures and finishes.



# SERVICE



It is Lusotufu's main concern to present its customers with the best solutions in a way that the style and performance of wall to wall carpets are adapted to the characteristics of the project.

Our company is specially oriented to provide personalised design projects, from traditional elegance to a minimalistic style.

The capacity and flexibility of our Production Division combined with the technical service of specialised design team, allows us to provide personalised solutions of wall to wall carpets and rugs for all kinds of projects and for all dimensions at competitive prices.

The portfolio of modern and traditional designs provides the initial inspiration, that can however be adapted. Although we possess an abundance of designs with available options, we also offer a complete service that allows the creation of original designs, adjusted to customer needs.

We can supply you with specific solutions for interior designers, architects and constructors with complete solutions to accommodate demanding building patterns of any commercial, public or private scenario.

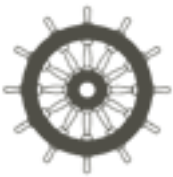
As part of our personalised design service, Lusotufu develops CAD simulations, presenting colours and textures as defined by the customer.

As necessary, we supply samples produced in the "Kibby" robot machine dedicated to the production of high precision prototypes.





**IMO**



## UNSETTLED WATERS REQUIRE SPECIALISED AND HIGH QUALITY CARPETS

Seagoing vessels require flooring with very specific characteristics and Lusotufu offers carpets that meet diverse requirements such as the all important fire resistance classification as defined by the International Maritime Organisation\* (IMO) for marine carpet enabling Lusotufu marine floorcovering to be installed in any craft regardless of size.

Carpets play a very important role in the interior environment of these vessels providing welfare and comfort for crew and passengers alike, ensuring a warm and pleasant environment and substantially enhancing the acoustic and thermal behaviour of cabins and common areas. The quality and diversity of Lusotufu marine carpet facilitates easier decision making by architects, designers and engineers.

**At Lusotufu there is always a solution for your space!**

\* IMO, the International Maritime Organisation is the United Nations specialised agency responsible for the protection and safety of shipping and the prevention of maritime pollution from shipping. (visit website <http://www.imo.org/>)





**SCOTCHGARD**

# OPTIONAL TREATMENTS



THE BEST WAY TO PROTECT YOUR CARPET FROM SPILLS STAINS AND DIRT

Scotchgard treatment is the best way to protect your carpet from spills, stains and dirt.

Scotchgard forms an invisible shield around every fibre, keeping your furnishings looking fresh and making them easier to clean and care for.

Scotchgard is extremely durable and gives lasting protection even in the most demanding conditions.

Scotchgard does not alter the colour, texture or flame retardancy, so even the most delicate silks can be treated with confidence.

Anti-static agents prevent the attraction of dry soils to carpets and fabrics, ensuring quick and effective everyday cleaning.

Spills are simply mopped up by absorbent paper or a clean towel – even dried in stains are easy to remove.

	<b>COPPER</b>	<b>SILVER</b>	<b>GOLD</b>	<b>PLATINUM</b>
	General Commercial	General Commercial	Heavy Commercial	Heavy Commercial
Construction	Tufted, Cut Pile			
Composition	80% Wool + 20% Polyamide			
Pile Weight	1.000g/m <sup>2</sup>	1.200g/m <sup>2</sup>	1.400g/m <sup>2</sup>	1.600g/m <sup>2</sup>
Pile Height	7,5mm	7,5mm	8,0mm	8,5mm
Backing	Jute			
Width	4,00m & 5,00m			



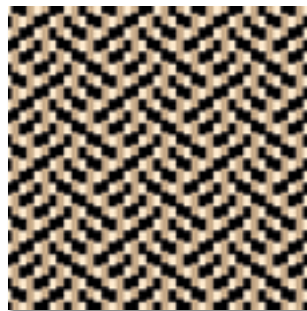


# GRAPHICS

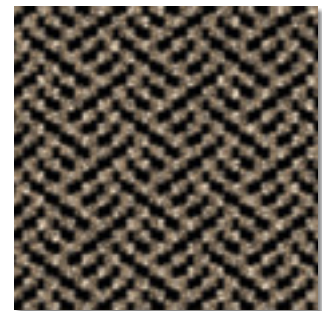
## SIMPLE DESIGNS

Simple geometric designs, using 2, 3 or 4 colours, provide the option for a significant variety of patterns and colour variants.

In the pictures displayed we can observe the computer generated graphics and the correspondingly produced wall to wall carpet.



VIRTUAL

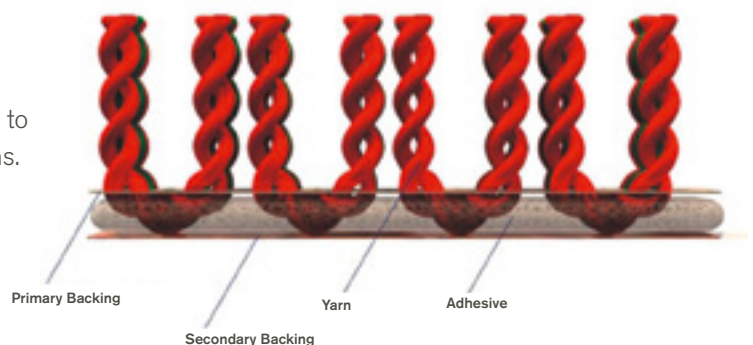


REAL

Flexibility in manufacturing, generates wall to wall carpets with patterns that are simple and exclusive.

This is the most universal method using a simultaneous needle yarn system on a polypropylene backing.

Flexibility in the appearance through the intermingling of different colours, textures and types of yarns permits the manufacture of wall to wall on a bespoke basis, with exclusive patterns.



HF Fénix Porto Hotel ★★☆☆



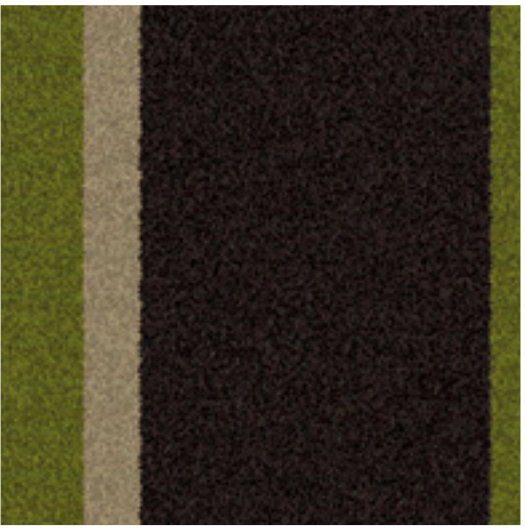


**GRAPHICS**  
2 COLOURS





**GRAPHICS**  
3 COLOURS





HF Ipanema Porto Hotel ★ ★ ★ ★







**GRAPHICS**  
2 COLOURS



**GRAPHICS**  
3 COLOURS





Hotel Dighton ★★☆☆



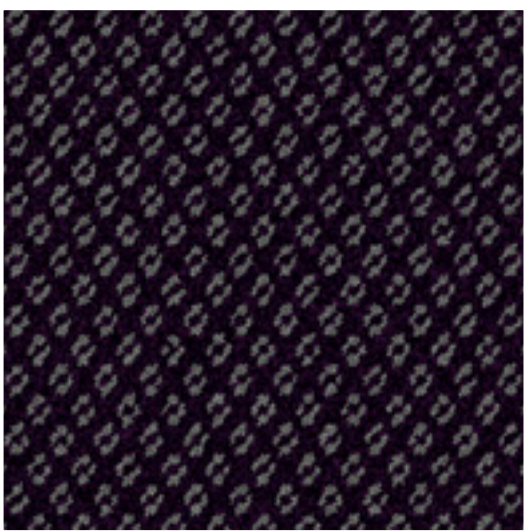


**GRAPHICS**  
2 COLOURS





**GRAPHICS**  
2 COLOURS





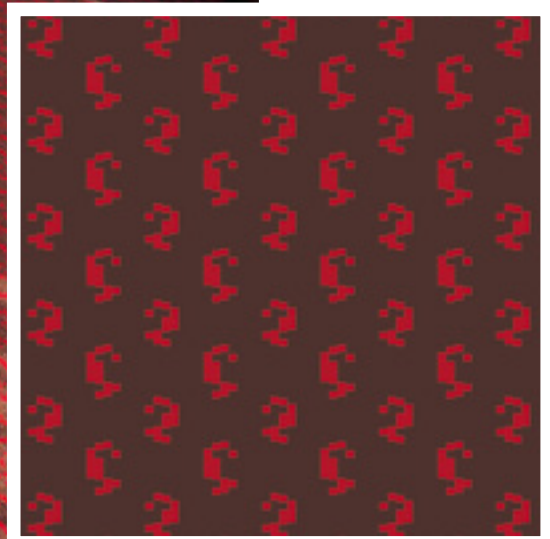
Sheraton Porto Hotel & SPA ★ ★ ★ ★ ★







**GRAPHICS**  
2 COLOURS



**GRAPHICS**  
3 COLOURS



HF Ipanema Porto Hotel ★★★★★

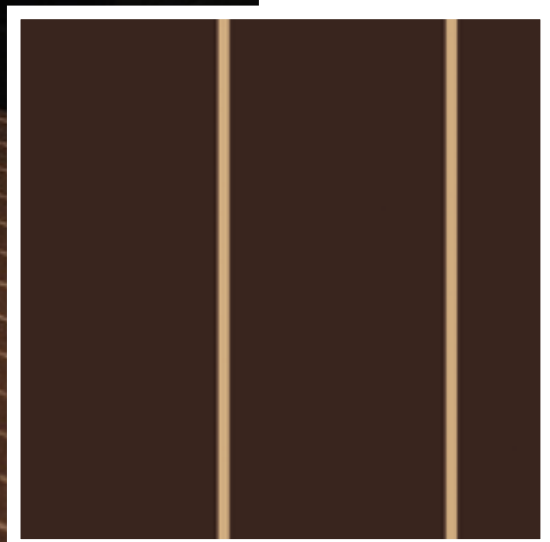


Hotel Girassol ★ ★ ★ ★

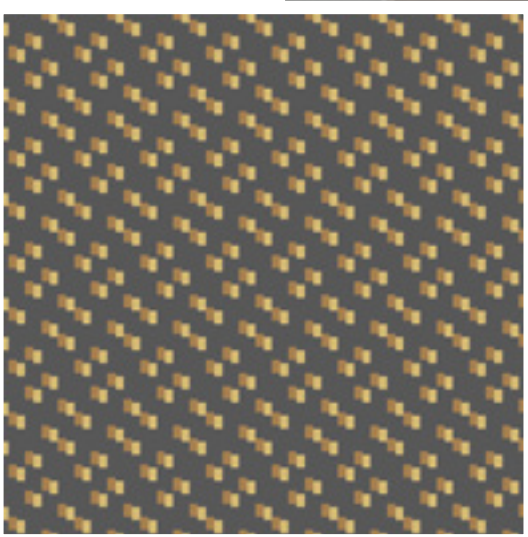




**GRAPHICS**  
2 COLOURS



**GRAPHICS**  
3 COLOURS





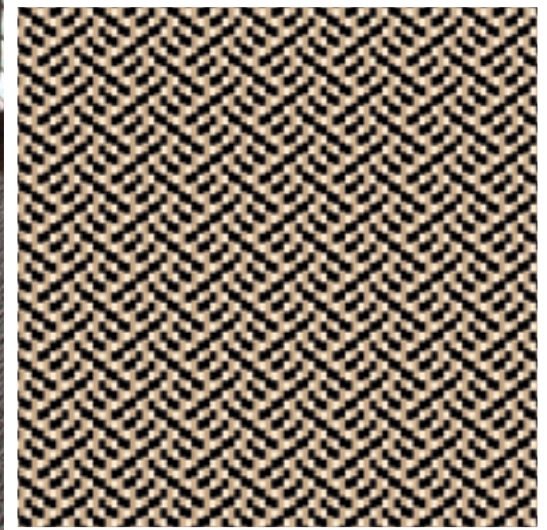
Hotel Casino Chaves ★ ★ ★ ★



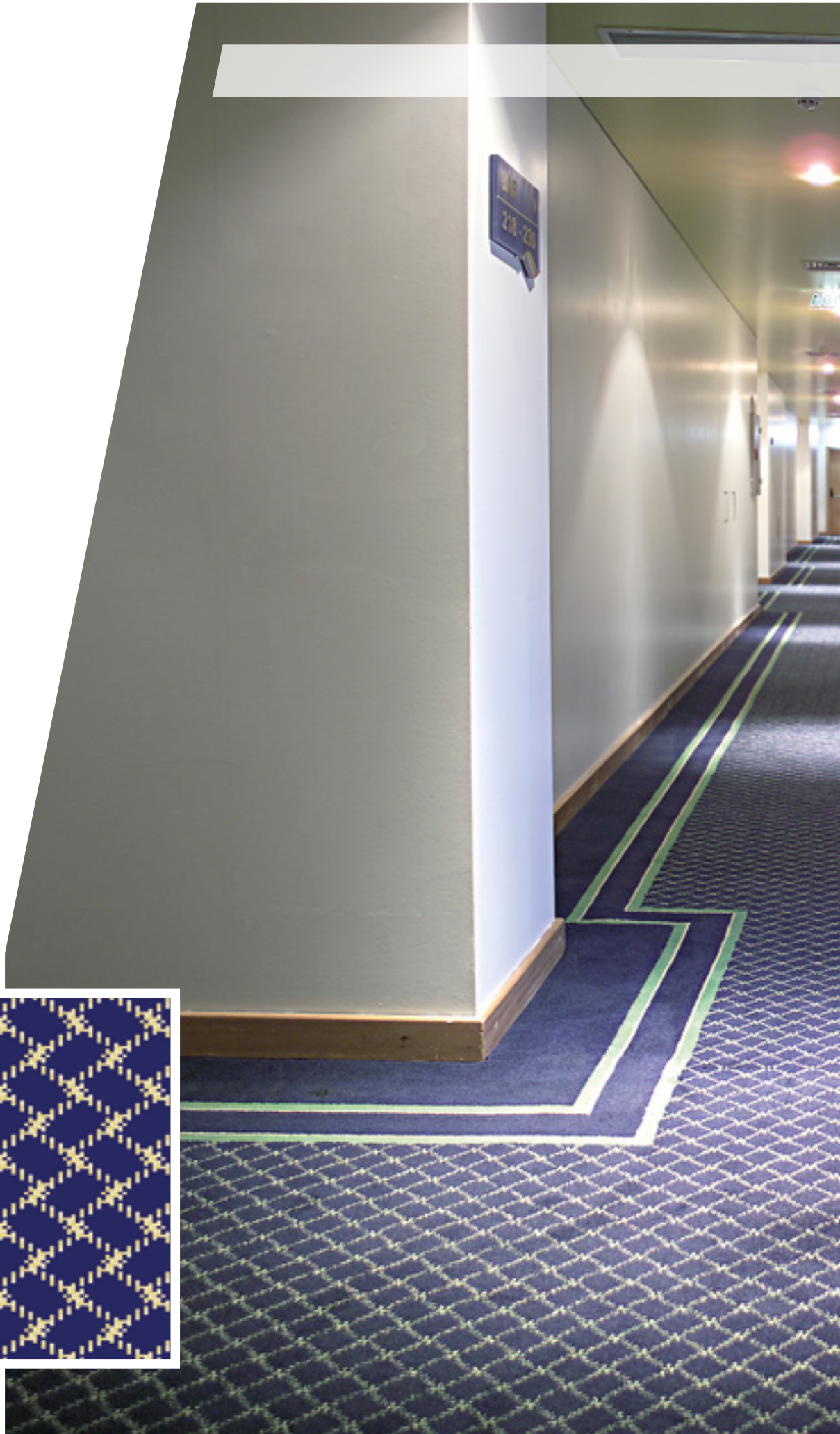
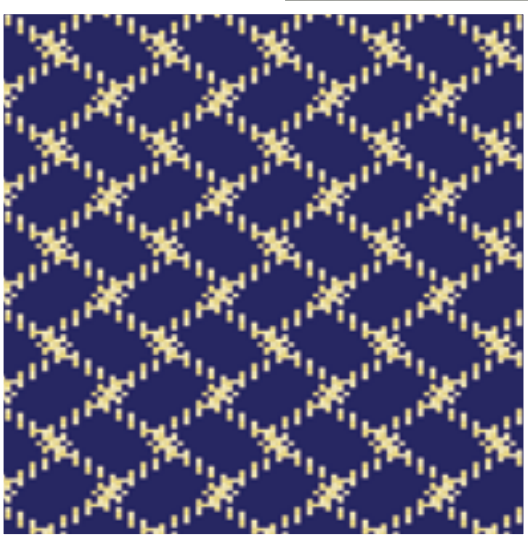




**GRAPHICS**  
3 COLOURS



**GRAPHICS**  
3 COLOURS



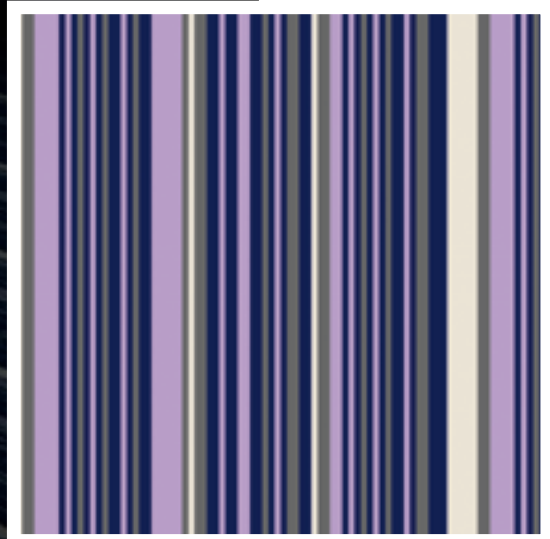


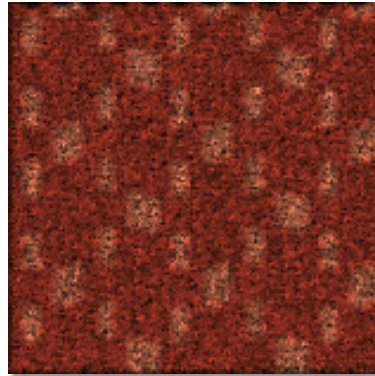
Holiday Inn Express Lisbon Airport ★★ ★



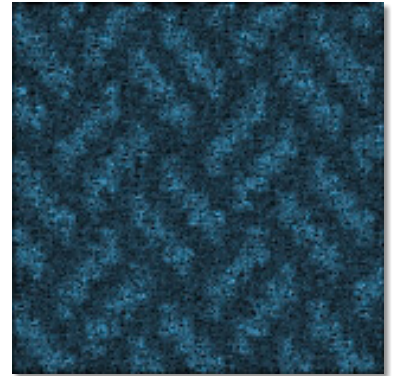


**GRAPHICS**  
4 COLOURS

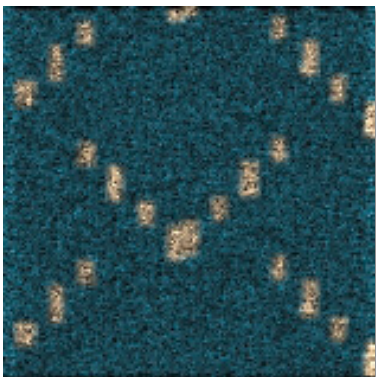




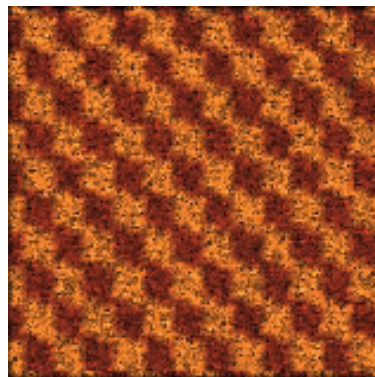
G1



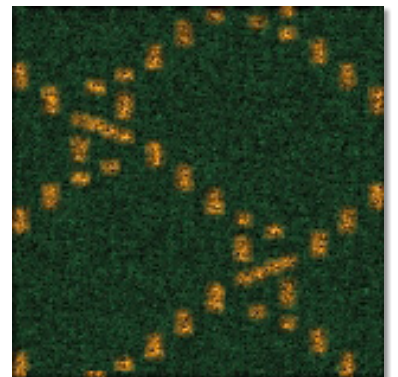
G2



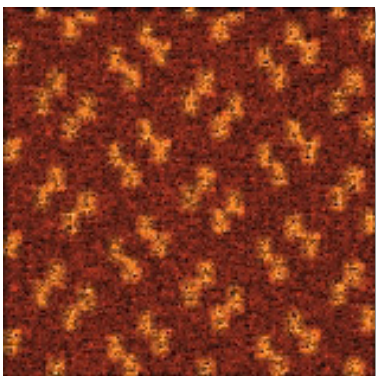
G3



G4



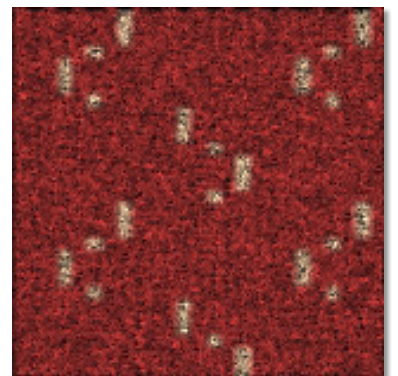
G5



G6

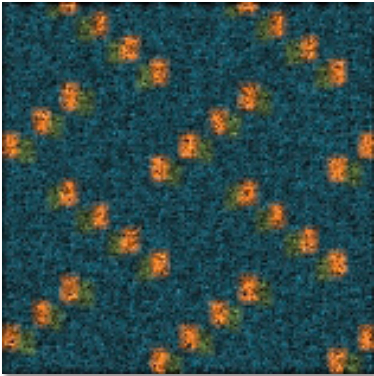


G7

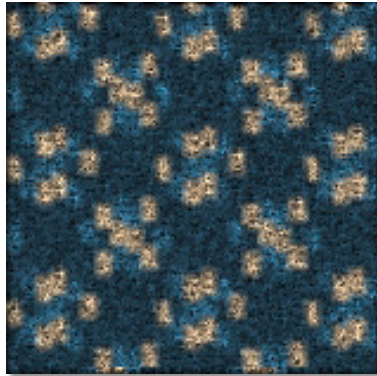


G8

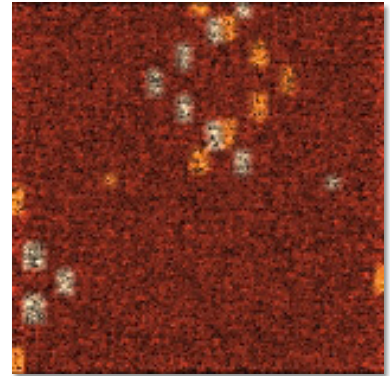
# Examples of Designs **GRAPHICS**



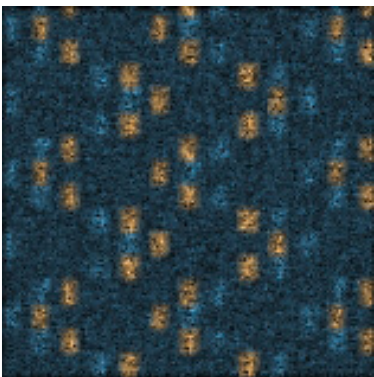
G9



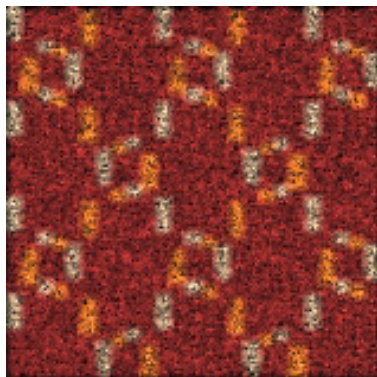
G10



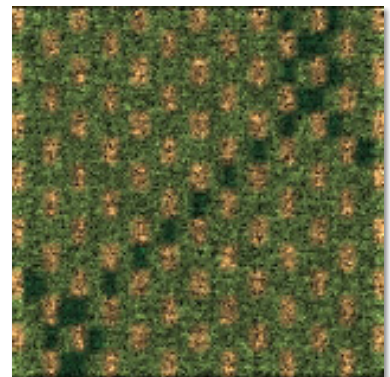
G11



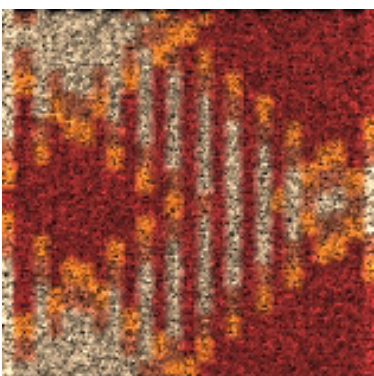
G12



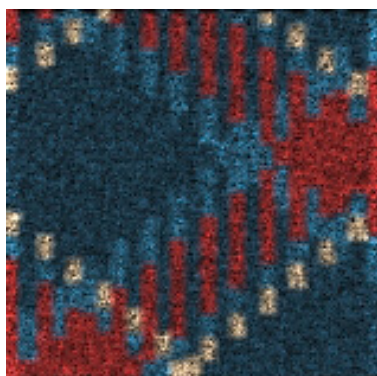
G13



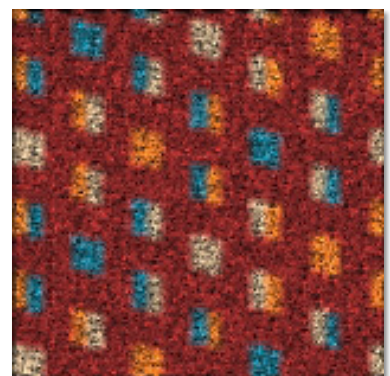
G14



G15



G16



G17

	<b>COPPER</b>	<b>SILVER</b>	<b>GOLD</b>	<b>PLATINUM</b>
	Heavy Commercial	Heavy Commercial	Heavy Commercial	Heavy Commercial
Construction	Woven, Cut Pile			
Composition	80% Wool + 20% Polyamide			
Pile Weight	1.225g/m <sup>2</sup>	1.380g/m <sup>2</sup>	1.530g/m <sup>2</sup>	1.680g/m <sup>2</sup>
Pile Height	7,5mm	7,5mm	7,5mm	7,5mm
Backing	PVA			
Width	3,66m - 4,00m			





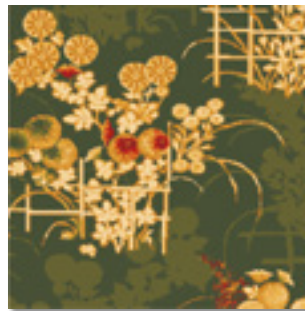
# AXMINSTER

## SOPHISTICATED DESIGNS

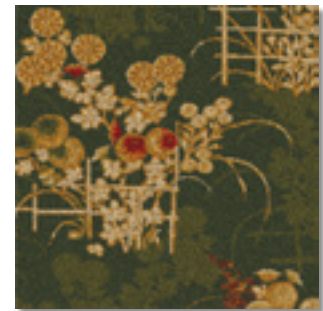
Axminster wall to wall carpets are installed in thousands of hotels, casinos, cruise liners, commercial buildings and private homes throughout the world.

16 colour availability introduces significant flexibility.

In the pictures displayed we can observe the computer generated graphics and the correspondingly produced wall to wall carpet.



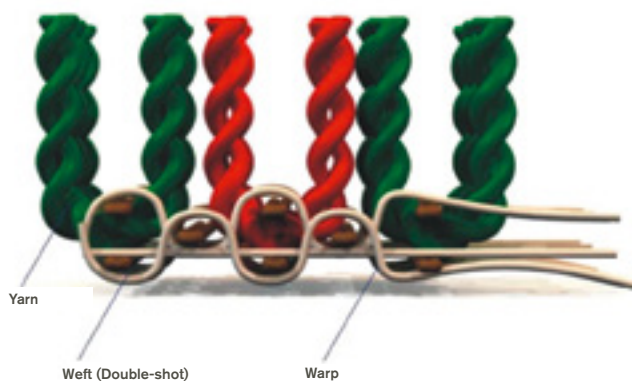
VIRTUAL



REAL

Quality, luxury and durability allow the development of wall to wall carpets with truly remarkable quality and definition.

This production method is commonly associated with quality, luxury and durability. Design options are almost endless.



Axminster wall to wall carpets are woven in a means whereby the yarn is inserted into the backing during the woven process.

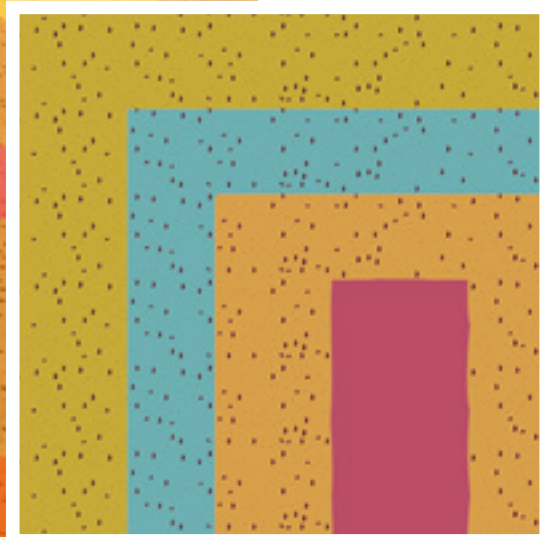
Each "U" tuft is held in place by the backing.

Arrábida Shopping



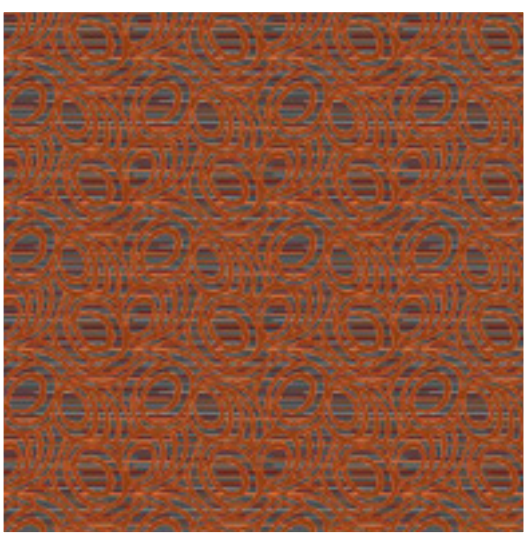


**AXMINSTER**  
5 COLOURS





**AXMINSTER**  
5 COLOURS



Hotel Dighton ★★☆☆



Hotel Sintra Bliss House





**AXMINSTER**  
3 COLOURS



Hotel Sintra Bliss House







**AXMINSTER**  
3 COLOURS



**AXMINSTER**  
7 COLOURS

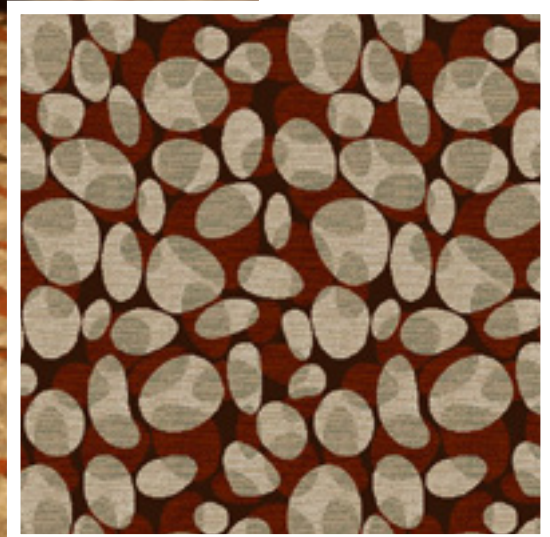








**AXMINSTER**  
6 COLOURS



**AXMINSTER**  
4 COLOURS





Queen Isabel (Douro Azul)





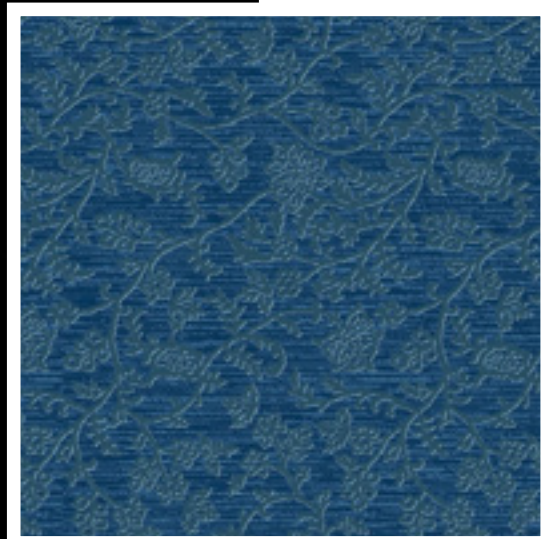
Queen Isabel (Douro Azul)







**AXMINSTER**  
3 COLOURS



**AXMINSTER**  
3 COLOURS



Hotel Pestana Carlton Madeira ★★★★★

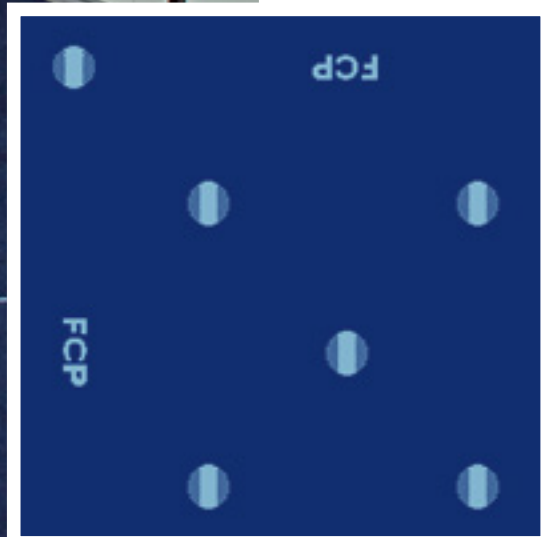


F.C. Porto - Estádio do Dragão



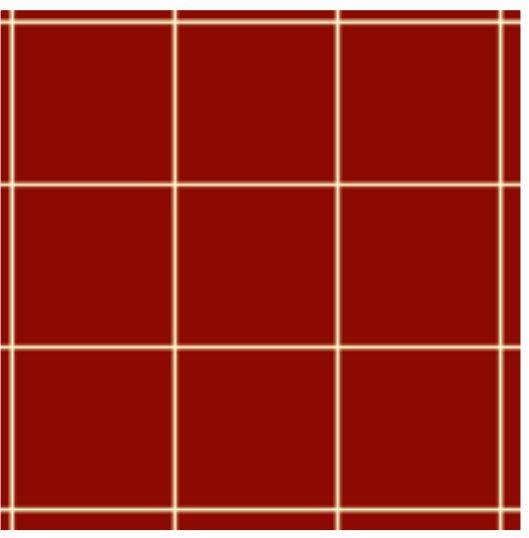


**AXMINSTER**  
2 COLOURS





**AXMINSTER**  
2 COLOURS



Pestana Cascais (Atlantic Gardens) ★★★★★



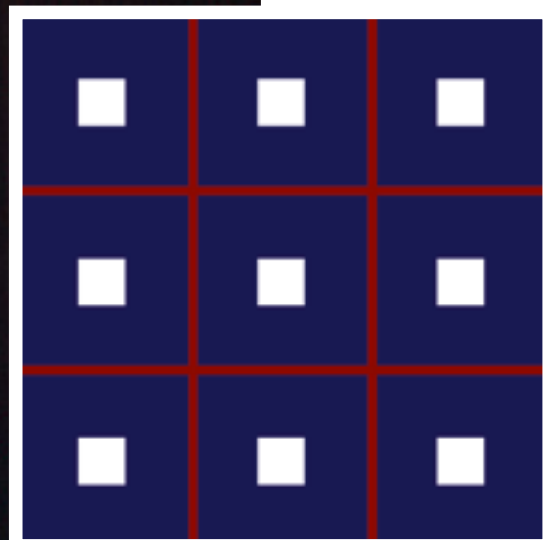
Pestana Cascais (Atlantic Gardens) ★★☆☆



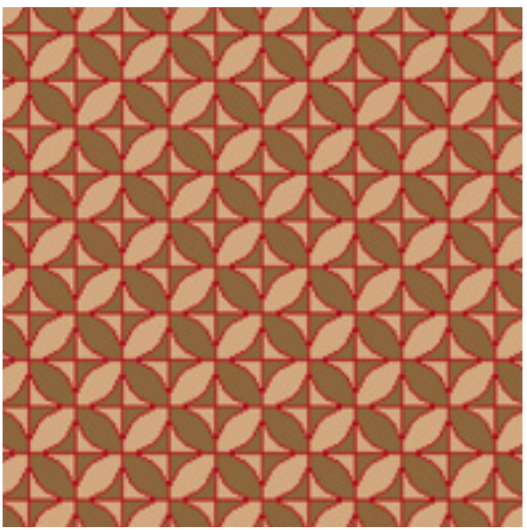




**AXMINSTER**  
3 COLOURS



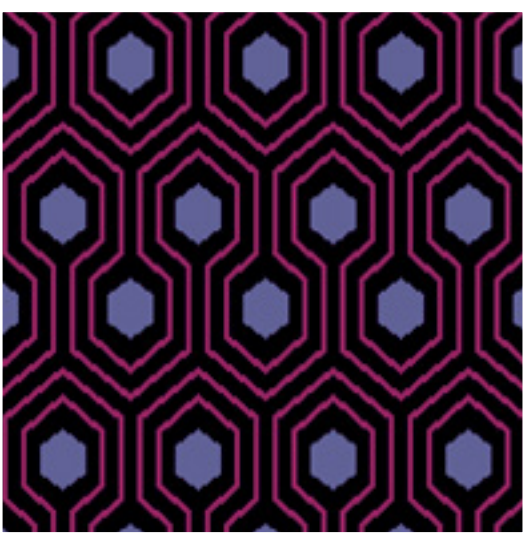
**AXMINSTER**  
3 COLOURS



Pestana Casino Park Hotel ★ ★ ★ ★ ★

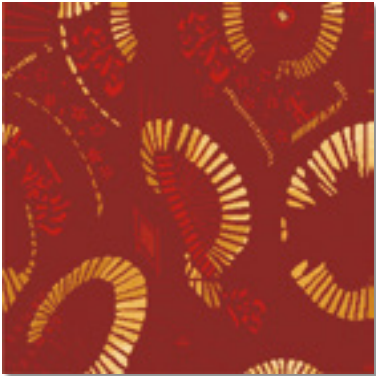


**AXMINSTER**  
3 COLOURS

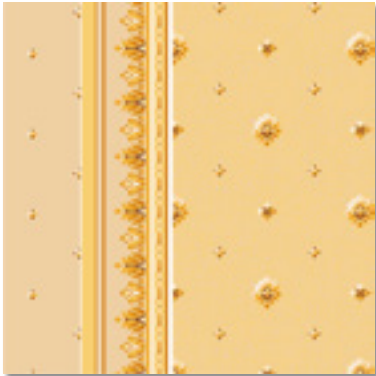




**AXMINSTER** Examples of Designs



A1



A2



A9



A3



A4



A5



A6



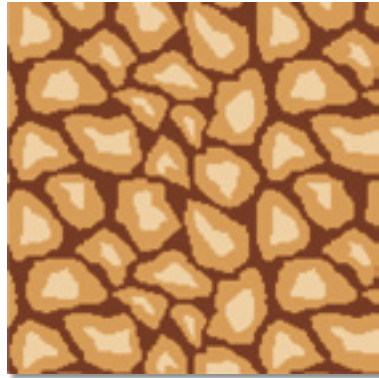
A7



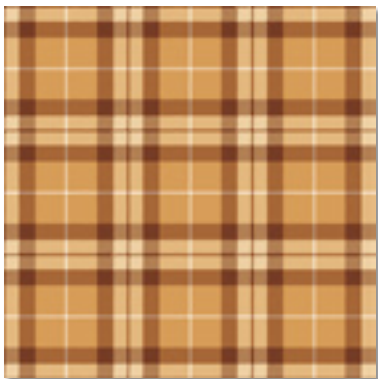
A8



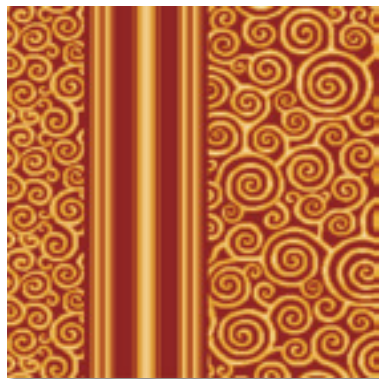
A10



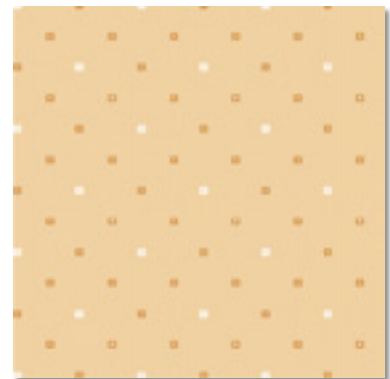
A11



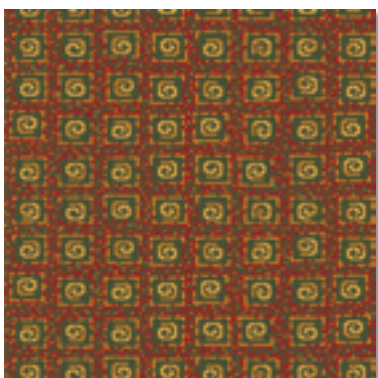
A12



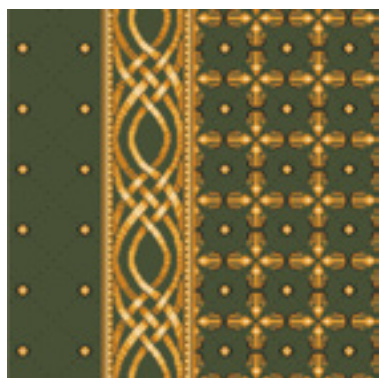
A13



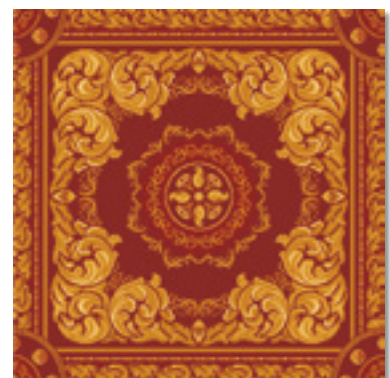
A14



A15



A16



A17



	<b>COPPER</b>	<b>SILVER</b>	<b>GOLD</b>	<b>PLATINUM</b>
	Heavy Commercial	General Commercial	Heavy Commercial	Heavy Commercial
Construction	Tufted, Cut Pile			
Composition	100% Polyamide			
Pile Weight	668g/m <sup>2</sup>	790g/m <sup>2</sup>	900g/m <sup>2</sup>	1.150g/m <sup>2</sup>
Pile Height	6,0mm	7,5mm	7,0mm	7,7mm
Backing	75% Polyester 25% Polyamide	Textile		
Width	4,00m			



# PRINTED

## ULTIMATE VERSATILITY

Wall to wall printing technology provides a broad variety of decorative options for offices, hotels, companies, shops and similar venues.

Personalised wall to wall carpets printed in colour, can be obtained from any image.

In the pictures displayed we can observe the computer generated graphics and the correspondingly produced wall to wall carpet.



VIRTUAL



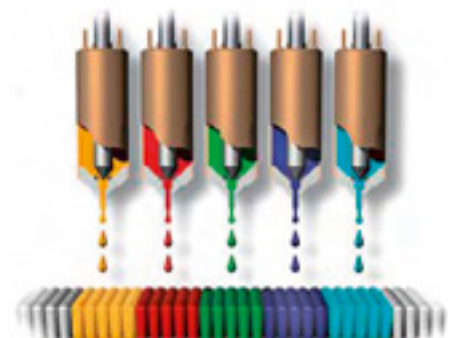
REAL

Unique and personalised product, with excellent colourfast values, high quality and construction.

Printed Carpet allows the personalisation of any environment in a way suited to personal taste.

Similar to other wall to wall carpets, printed carpets can be easily maintained, through water/steam washing without adversely affecting appearance.

The colours are transferred during the printing process to the fibres through extreme heat and pressure.



**PRINTED**  
8 COLOURS



Tróia Design Hotel ★ ★ ★ ★ ★



Tróia Design Hotel ★★★★★

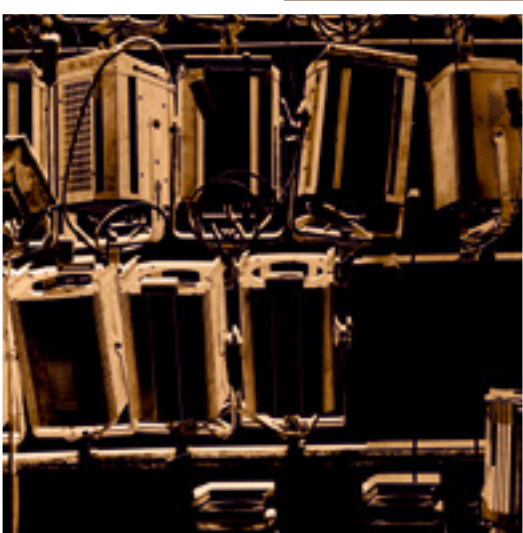




**PRINTED**  
8 COLOURS



**PRINTED**  
12 COLOURS





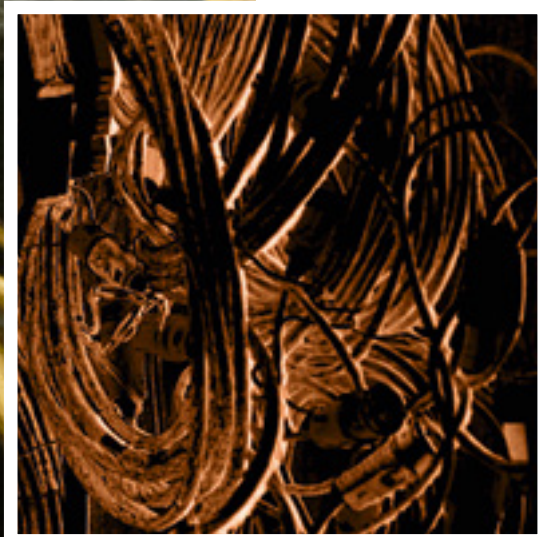
Hotel Teatro ★ ★ ★ ★







**PRINTED**  
12 COLOURS



**PRINTED**  
3 COLOURS





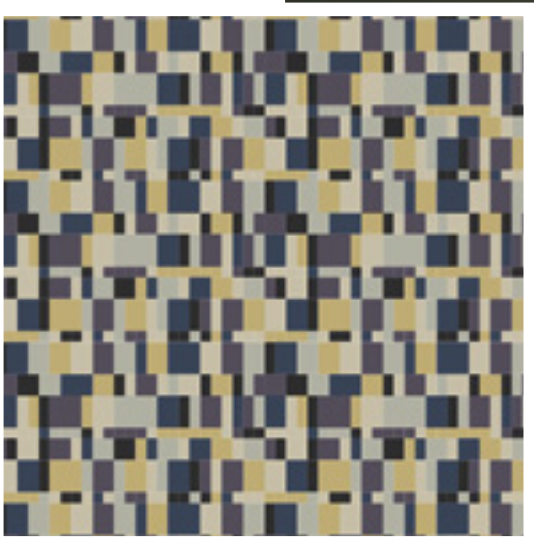
Casino de Tróia





**PRINTED**  
10 COLOURS

**PRINTED**  
6 COLOURS



Hotel Axis Viana Business & Spa Hotel ★★☆☆



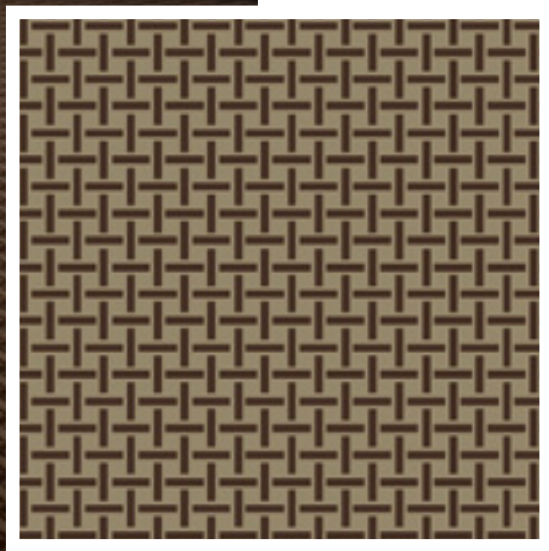
HF Tuela Porto ★ ★ ★



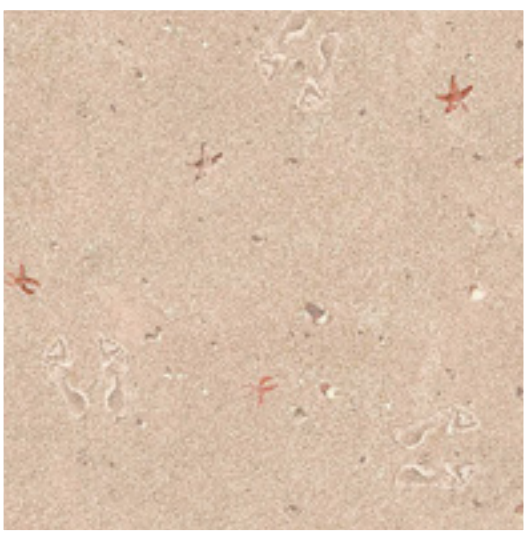




**PRINTED**  
2 COLOURS



**PRINTED**  
14 COLOURS



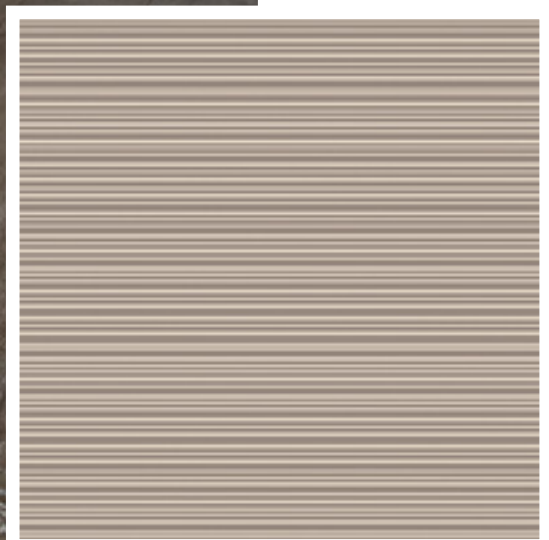


Meliá Braga Hotel & Spa ★ ★ ★ ★ ★

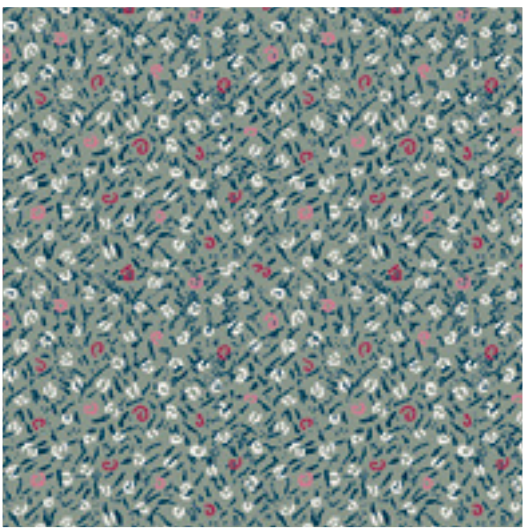




**PRINTED**  
2 COLOURS



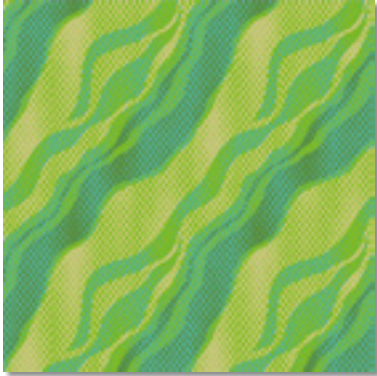
**PRINTED**  
5 COLOURS



Hotel Tivoli Slntra ★★★★★



**PRINTED** Examples of Designs



P1



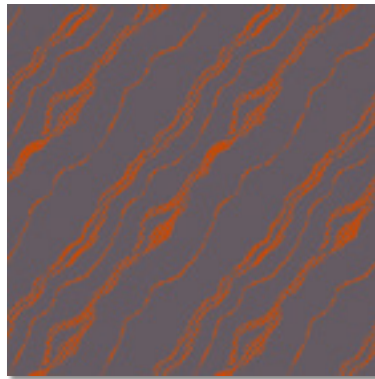
P2



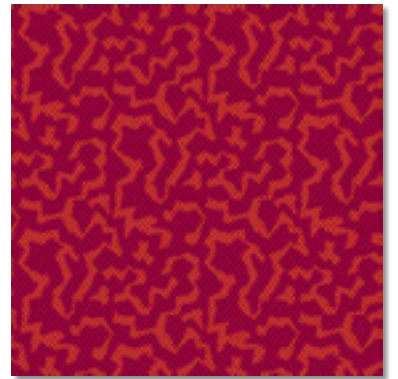
P9



P3



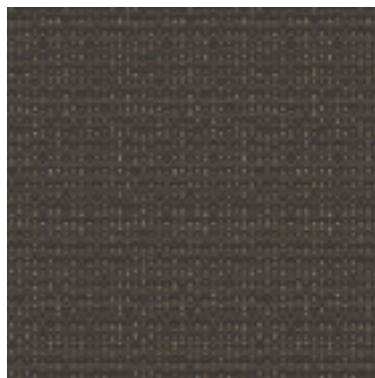
P4



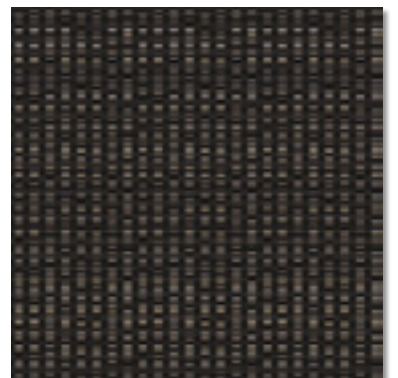
P5



P6

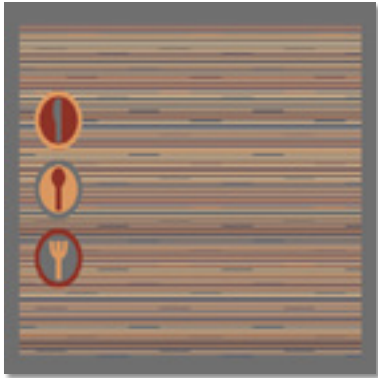


P7

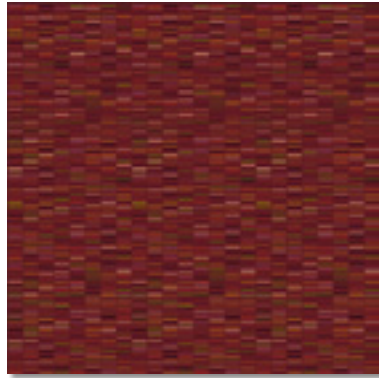


P8





P10



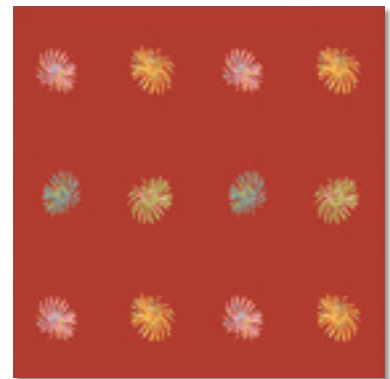
P11



P12



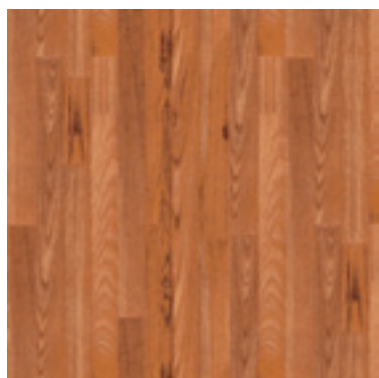
P13



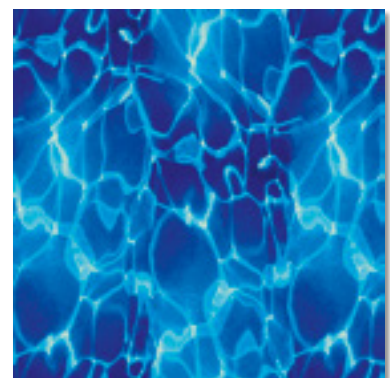
P14



P15



P16



P17



# TILES

Tiles have several advantages. They are versatile, easily maintained and can be installed in any location, providing ample flexibility and the ultimate combination of colour, texture and design styling.

Suitable for areas where high traffic, soiling, staining and frequent usage are experienced.



Tiles are recommended for areas with a high probability of damage, soiling, staining and intensive wear, being easily and individually interchanged or replaced when damage occurs or when access to the subfloor is required.







# RUGS

We offer a broad range of rugs produced by manual or mechanical means. Rugs can be tailor made to your own specification or you can select from our broad range of materials, textures, colours and sizes.

In all cases we manufacture to the highest quality standards.

Our products correspond to the highest requirements of quality, colour and design.

MATERIALS	
NATURALS	SYNTHETICS
Cotton, Coir, Wool, Flax, Natural Leather, Seagrass, Natural Silk, Sisal	Acrylic, Artificial Leather, Nylon, Polyester, Polypropylene, PVC, Synthetic Grass, Viscose

Our team of inhouse colourists designers and stylists maintain a full portfolio of the latest international interior design trends.

## TYPES OF MANUFACTURING

HAND TUFTED

HAND WOVEN

HAND KNOTTED

HAND STITCHED

MACHINE MADE

PRINTED







Axis Viana Business & Spa Hotel ★★☆☆



Holiday Inn Express Lisbon Airport ★ ★ ★









HF Fénix Lisboa ★★☆☆











HF Fénix Porto ★★★★★









HF Ipanema Park ★★★★★









HF Tuela ★★★



you

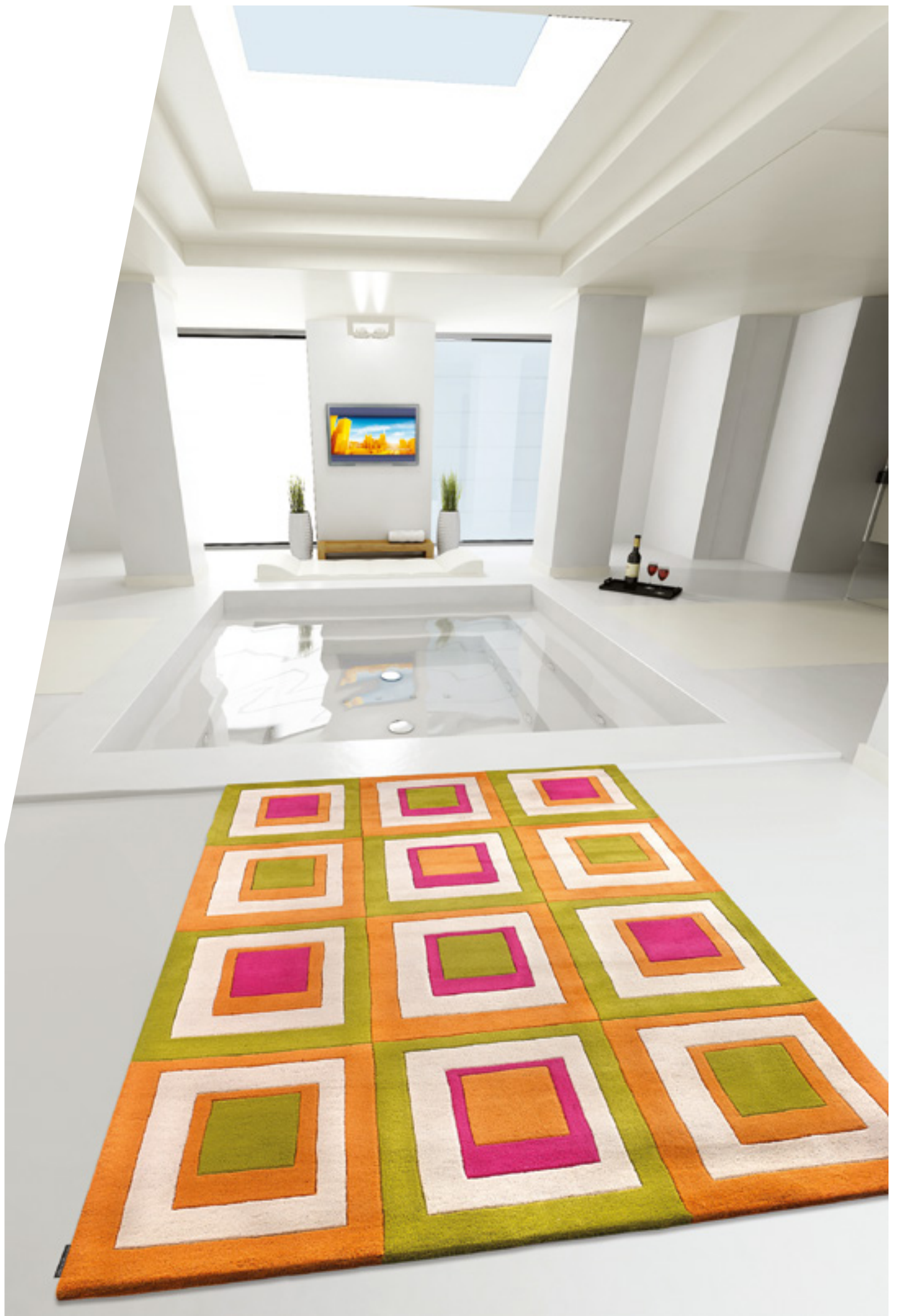
cre

can

custommade

create  
your own  
rug

ate



# create your own rug creta

## HAND-MADE RUGS

### create your own carpet

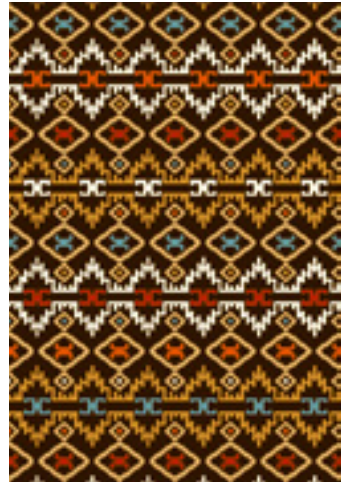
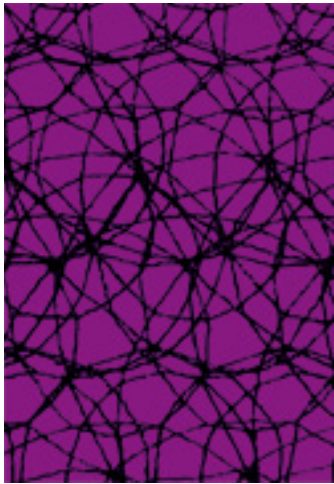
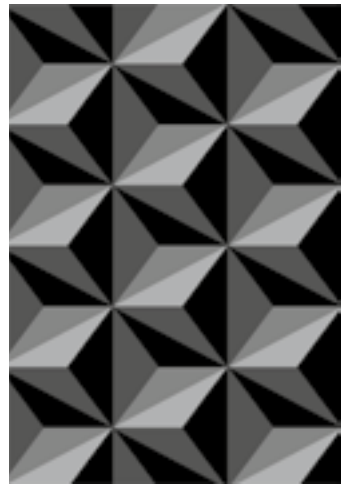
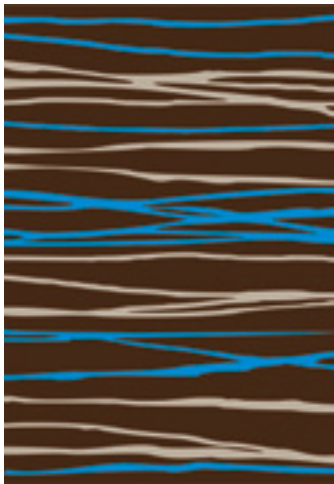
In this quality, you can create your own rug by drawing linear or geometric forms, in the available colours.

In Creta, you are only limited by your own imagination, as you create your own design, colour and size.

		HEIGHT (mm)	WEIGHT (g/m <sup>2</sup> )	KNOTS (/m <sup>2</sup> )
HAND TUFTED	HAND TUFTED	12	3.000	---
ESPECIAL	HAND KNOTTED	14	5.000	48.400
FINE		12	5.000	67.600
EXTREME		10	5.000	86.400

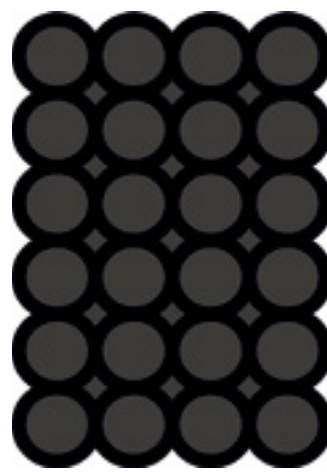
\*Commonly used materials in this collection are wool and viscose. Other materials are available at your request.





The background of the page is a light yellow color. It features several decorative floral patterns. In the top left, there is a blue, stippled pattern of leaves and flowers. In the top right, there is an orange, line-art pattern of a flower. In the middle left, there is a large orange line-art flower with a blue stippled center. In the middle right, there is a blue stippled pattern of leaves and flowers. In the bottom left, there is a blue stippled pattern of leaves and flowers. In the bottom right, there is an orange line-art pattern of a flower.

some  
examples of  
patterns

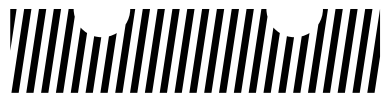


create your own rug



# special finishes

carving



embossing



Without carving

With carving



With embossing

Without embossing





# create your own rug extreme

**Turn your ideas into reality  
with Lusotufo's new custom-made service!**

Release your imagination and make your own rug!

Lusotufo offers you a new rug customisation service which is based on a wide variance of materials and finishes, allowing you the opportunity to develop your own rug embracing both uniqueness and exclusivity.

Historical limitations in designs of high complexity cease to exist with the introduction of a new CAD automatic cutting machine, recently and specifically developed for Lusotufo, permitting the rapid production of any design and size with millimetre precision and absolute reproducibility.

See our catalogues where you can find various kinds of materials at your disposal, such as carpets and rugs in wool, polypropylene, polyamide, sisal and other materials that you can use as a base of your rug.

Please contact our dealer in the store nearest you for more information!

**Check the examples on the following pages!**









### SOLVERDE HOTÉIS & CASINOS

Hotel Solverde Spa and Wellness Centre \*\*\*\*\*  
 Aparthotel Solverde  
 Algarve Casino Hotel \*\*\*\*\*  
 Hotel Casino Chaves \*\*\*\*  
 Casino de Espinho  
 Casino de Chaves  
 Casino de Vilamoura  
 Casino de Portimão  
 Casino de Monte Gordo

### MAROPE HOTELARIA

Sheraton Porto Hotel & Spa \*\*\*\*\*  
 Sheraton Lisboa Hotel & Spa \*\*\*\*\*  
 Hotel Crowne Plaza Vilamoura \*\*\*\*\*

### PESTANA HOTELS & RESORTS

Pestana Cascais (Atlantic Gardens) \*\*\*\*  
 Hotel Pestana Carlton Madeira \*\*\*\*  
 Pestana Casino Park Hotel \*\*\*\*\*  
 Pousada dos Lóios

### REGENCY HOTELS & RESORTS

Hotel Regency Palace \*\*\*\*\*  
 Hotel Regency Club \*\*\*\*  
 Madeira Regency Cliff Hotel \*\*\*\*

### TRYP HOTELS / MELIÁ

Tryp Lisboa Aeroporto Hotel \*\*\*\*  
 Tryp Oriente \*\*\*\*  
 Tryp Porto Expo \*\*\*  
 Tryp Porto Centro \*\*\*  
 Meliá Braga Hotel & Spa \*\*\*\*\*  
 Meliá Ria \*\*\*\*\*  
 Tryp Dona Maria \*\*\*\*

### HOTÉIS TIVOLI

Tivoli Lisboa \*\*\*\*\*  
 Hotel Tivoli Sintra \*\*\*\*  
 Hotel Tivoli Lagos \*\*\*\*  
 Hotel Tivoli Oriente \*\*\*\*

### HOTÉIS FÉNIX

HF Tuela Porto \*\*\*  
 HF Fénix Porto Hotel \*\*\*\*  
 HF Ipanema Porto Hotel \*\*\*\*\*  
 Hotel Ipanema Park \*\*\*\*\*  
 HF Fénix Lisboa \*\*\*\*  
 HF Fénix Garden \*\*\*

### AMORIM TURISMO

Tróia Design Hotel \*\*\*\*\*  
 Casino de Tróia

### DOURO AZUL

Amavida (Navio-Hotel)  
 Queen Isabel (Navio-Hotel)  
 Viking Torgil (Navio-Hotel)  
 Viking Hemming (Navio-Hotel)

### PORTUSCALE CRUISES

Paquete Arion  
 Paquete Funchal

### AXIS HOTELS

Axis Viana Business & SPA Hotel \*\*\*\*  
 Axis Ofir Beach Resort Hotel \*\*\*\*  
 Axis Porto Business and SPA Hotel \*\*\*\*  
 Axis Ponte de Lima - Golf Resort Hotel \*\*\*  
 Axis Vermar Conference & Beach Hotel \*\*\*\*

### VILA GALÉ

Hotel Vila Galé Porto \*\*\*\*  
 Hotel Vila Galé Ópera \*\*\*\*  
 Vila Galé Collection Palácio dos Arcos \*\*\*\*\*  
 Hotel Vila Galé Náutico \*\*\*\*

### HOTEIS HOLIDAY INN EXPRESS

Hotel Holiday Inn Express Porto Exponor \*\*\*  
 Holiday Inn Express Lisbon Airport \*\*\*

### CS HOTELS, GOLF & RESORTS

CS Salgados Golf & Beach Hotel \*\*\*\*\*  
 CS Hotel do Lago Montargil \*\*\*\*\*  
 CS Salgados Grande Hotel \*\*\*\*\*  
 Palácio de Congressos do Algarve

### TURISTRELA

Hotel Serra da Estrela \*\*\*\*  
 Estalagem Varanda dos Carqueijais \*\*\*\*

### HOTÉIS DO BOM JESUS

Hotel do Parque \*\*\*\*  
 Hotel do Elevador \*\*\*\*  
 Hotel do Lago \*\*\*  
 Hotel do Templo \*\*\*\*

### OTHER HOTEL UNITS IN PORTUGAL

#### Lisboa

Hotel Inglaterra Charm & Boutique \*\*\*\*  
 America Diamonds Hotel \*\*\*  
 NH Campo Grande \*\*\*\*  
 Holiday Inn Lisbon-Continental \*\*\*\*  
 Radisson SAS Hotel Lisboa \*\*\*\*  
 Hotel Vip Inn Veneza \*\*\*  
 Hotel America Diamond's \*\*\*  
 Hotel Vip Executive Barcelona \*\*\*\*  
 Turim Lisboa Hotel \*\*\*\*  
 Lezíria Parque Hotel \*\*\*  
 Hotel Sintra Bliss House  
 Hotel Mivon

#### Porto

Bessa Hotel \*\*\*\*  
 Hotel da Música \*\*\*\*  
 Hotel Teatro \*\*\*\*  
 Quality Inn Portus Cale \*\*\*\*  
 Hotel Quality Batalha Porto \*\*\*  
 Residencial da Foz \*\*\*  
 Hotel Star Inn Porto \*\*\*  
 Porto Antas Hotel \*\*\*  
 Albergaria Cervantes \*\*\*  
 Motel Habana  
 Motel Flamingo  
 Hotel Egatur Maia \*\*\*\*  
 Hotel Praia Golfe \*\*\*\*



Santana Hotel \*\*\*\*  
Casa da Calçada Relais & Châteaux \*\*\*\*  
Hotel e Clube de Golfe de Amarante  
Hotel Navarras \*\*\*  
Douro River Hotel \*\*\*\*  
Hotel Cidnay \*\*\*\*  
Quinta da Pacheca

### **Braga**

Hotel Fundador \*\*\*  
Estalagem Parque do Rio

### **Viana do Castelo**

Boega Hotel \*\*\*\*  
Hotel Porta do Sol \*\*\*\*  
Hotel Turismo do Minho \*\*\*\*  
Hotel Minho \*\*\*\*

### **Bragança**

Estalagem do Caçador \*\*\*\*  
Hotel Muchacho  
Estalagem Senhora das Neves \*\*\*\*

### **Aveiro**

Grande Hotel do Luso \*\*\*\*  
Hotel Dighton \*\*\*\*  
Hotel Moliceiro \*\*\*\*  
Estalagem de Sangalhos \*\*\*\*  
Hotel Nova Cruz \*\*\*  
Hotel Afonso V \*\*\*  
Best Western Hotel Imperial \*\*\*  
Residencial dos Lóios  
Hotel Meia Lua \*\*\*\*  
Hotel Barra \*\*\*  
Hotel La Fontaine \*\*\*  
Hotel Cidade Ílhavo

### **Coimbra**

Hotel Dona Inês Coimbra \*\*\*  
Hotel Astória \*\*\*  
Quiaios Hotel \*\*\*\*

### **Leiria**

Hotel das Termas \*\*

### **Viseu**

Douro Park Hotel \*\*\*\*  
Nelas Park Hotel \*\*\*

### **Guarda**

Hotel Vanguarda \*\*\*

### **Branco**

Hotel Santa Eufémia \*\*  
Hotel "O Alambique D'Ouro" \*\*\*  
Varandas do Zêzere

### **Santarém**

Hotel do Prado \*\*\*  
Residencial Santo Amaro  
Residencial Alecrim  
Hotel Avenida de Fátima \*\*\*

### **Setúbal**

Albergaria Don Nuno

### **Portalegre**

Hotel D. Luis \*\*\*

### **Faro**

The Lake SPA Resort \*\*\*\*\*  
Cascade Resort Hotel Lagos \*\*\*\*\*  
Hotel Topázio \*\*\*  
Hotel dos Navegadores \*\*\*  
Hotel Guerreiros do Rio

### **Madeira**

Four Views Monumental Lido \*\*\*\*  
Hotel Oásis Atlantic \*\*\*\*  
Hotel Monumental Lido \*\*\*\*  
Hotel Orca Praia \*\*\*  
Hotel Girasol \*\*\*\*  
Hotel Dorisol Florasol Madeira \*\*\*  
Monte Mar Palace Hotel \*\*\*\*  
Albergaria Dias \*\*\*  
Hotel Porto Moniz  
Estalagem do Santo da Serra \*\*\*\*

### **Açores**

Hotel Açores Atlântico \*\*\*\*  
Aparthotel Antillia \*\*\*\*  
Hotel Camões \*\*\*\*  
Hotel Ponta Delgada \*\*\*  
Atlântida Mar Hotel \*\*\*\*

### **INTERNATIONAL UNITS**

#### **Marocco**

Golden Tulip Rawabi Marrakech\*\*\*\*  
Shem's Casino – Agadir  
Hotel Sofitel Agadir Thalassa Sea & Spa \*\*\*\*\*  
The Pearl Marrakech\*\*\*\*\*  
Hivernage Hotel & Spa/Pearl \*\*\*\*\*  
Hotel Barceló Fès Medina \*\*\*\*  
Villa Blanca Hotel & Spa \*\*\*\*  
Bab Hotel Marrakech \*\*\*\*  
Amphitrite Beach Hotel \*\*\*\*  
Art Palace & Spa Casablanca \*\*\*\*\*  
Sirayane Boutique Hotel & Spa \*\*\*\*\*  
Ristorante Italiano L'Ultimo Bacio \*\*\*\*\*  
Riad Lotus Club  
Mosque Samir  
Al Baraka  
Anfa Suite Hotel  
Royal Air Maroc  
Hotel Imperial Casablanca \*\*\*\*  
Hyatt Place Golf Hotel Taghazout Bay \*\*\*\*\*  
Royal Club Equestre Dar Essalam-Rabat  
Radisson BLU Hotel Marrakech Carré Eden \*\*\*\*\*

#### **Angola**

Casino Olympia  
Hotel Serra de Chela  
Hotel Serra de Chela II

### **Cabo Verde**

Hotel Oásis Atlântico Salinas Sea \*\*\*\*\*  
Hotel Oasis Belorizonte \*\*\*

### **Lybia**

Tripoli Grand Hotel \*\*\*\*\*

### **Algeria**

Hilton Alger Hotel \*\*\*\*  
Hotel Hani Alger \*\*\*\*  
Mosque Kouba Alger

### **Tunisia**

Les Berges Du Lac Concorde \*\*\*\*  
Hotel Paris \*\*\*

### **Senegal**

Hotel Fleur de Lys Hotel \*\*\*\*

### **France**

Hostellerie du Chateau de la Chevre D'or \*\*\*\*\*

### **Spain**

Hotel Meliá Madrid

### **OTHER UNITS**

Assembleia da República Portuguesa  
Vodafone  
BCP – Banco Comercial Português  
Banco BPI  
Finibanco  
BBVA - Banco Bilbao Vizcaya Argentaria  
BPN - Banco Português de Negócios  
Real - Companhia de Seguros  
FCP - Futebol Clube do Porto (Estádio)  
FCP - Futebol Clube do Porto SAD  
Museu do Futebol Clube do Porto  
AEP – Associação Empresaria de Portugal  
Centro Comercial Colombo  
Arrábida Shopping  
Auditório Simria  
Sogrape Vinhos, SA  
Clube de Golfe da Ilha Terceira  
Discoteca Twins - Porto  
Discoteca Twins - Lisboa  
Luz & Som - Porto  
Luz & Som - Lisboa  
Restaurante Real Indiana - Porto  
Restaurante Essência - Porto  
Cifial, SA  
Caves Ferreirinha  
Grupo DESFO  
Gil Sousa Fashion Jewel's  
NLC - New Line Cinemas  
Cinemas UCICaves Ferreirinha (V.N. Gaia)  
Grupo DESFO (Grijó)  
Gil Sousa Fashion Jewel's (V.N. Gaia)  
NLC - New Line Cinemas (Lisboa)



EN 14041



EN 1307

# GRAPHICS



## COPPER

## SILVER

## GOLD

## PLATINUM

General Commercial

General Commercial

Heavy Commercial

Heavy Commercial

Construction  
CompositionTufted, Cut Pile  
80% Wool + 20% Polyamide

Pile Weight	1.000g/m <sup>2</sup>	1.200g/m <sup>2</sup>	1.400g/m <sup>2</sup>	1.600g/m <sup>2</sup>
Total Weight	1.960g/m <sup>2</sup>	2.150g/m <sup>2</sup>	2.400g/m <sup>2</sup>	2.600g/m <sup>2</sup>
Pile Height	7,5mm	7,5mm	8,0mm	8,5mm
Total Height	10,0mm	10,5mm	11,0mm	12,0mm
N° Points/m <sup>2</sup>	99.200	102.300	105.400	120.900

Gauge  
Backing  
Width1/8"  
Jute  
4m and 5m

COLOUR FASTNESS

To rubbing  
To light4  
5

Reaction to Fire

Cfl s1

MAINTENANCE

The implementation of an adequate cleaning and maintenance regime from the time of installation of your commercial carpeting, makes it possible to safeguard your carpets appearance, enhance the image of your installation and ensure continued high performance throughout its life cycle. To ensure the carpet will last longer and look better just follow the three basic rules of carpet maintenance: vacuum regularly; remove spills immediately; professionally clean as required (usually no more than once every year or two).

INSTALLATION

Vacuum the old carpet before it is removed, to help eliminate dust.  
The surface should be plain, dry and clean.  
Ensure prior to installation the carpet is completely stretched to minimise wrinkling and rippling.



TREATMENT Scotchgard (Option)

Scotchgard protection preserves your carpet from the risks of soiling and staining, making it easy to care for your carpets or rugs, preserving their looks for a longer period of time.



TREATMENT IMO (Option)

This product can have a special treatment to comply with the Council Directive of the European Union 96/98/EC of 20 December 1996 on marine equipment.

LUSOTUFO<sup>®</sup> reserves the right to amend any technical details without prior notice.

LUSOTUFO, SA

Apartado 32 | 3889-853 Cortegaça OVR | Portugal | Telef./Phone: (+351) 256.750.500 | Fax: (+351) 256.750.504 | E-mail: lusotuf@lusotuf.pt | www.lusotuf.com

CE

EN 14041



EN 1307

# AXMINSTER



## COPPER

## SILVER

## GOLD

## PLATINUM

Heavy Commercial

Heavy Commercial

Heavy Commercial

Heavy Commercial

Construction  
Composition

Woven, Cut Pile  
80% Wool + 20% Polyamide

Pile Weight	1.225g/m <sup>2</sup>	1.380g/m <sup>2</sup>	1.530g/m <sup>2</sup>	1.680g/m <sup>2</sup>
Total Weight	2.000g/m <sup>2</sup>	2.200g/m <sup>2</sup>	2.200g/m <sup>2</sup>	2.400g/m <sup>2</sup>
Pile Height	7,5mm	7,5mm	7,5mm	7,5mm
Total Height	10,5mm	10,5mm	10,5mm	10,5mm
N° Points/m <sup>2</sup>	86.940	97.704	108.744	119.508
Pitch	7 per inch	7 per inch	7 per inch	7 per inch
Rows	8 per inch	9 per inch	10 per inch	11 per inch

Gauge  
Backing  
Width

1/7"  
Polypropylene  
3,66m and 4m

COLOUR FASTNESS

To rubbing  
To light

4  
5

Reaction to Fire

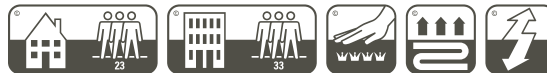
Cfl s1

MAINTENANCE

The implementation of an adequate cleaning and maintenance regime from the time of installation of your commercial carpeting, makes it possible to safeguard your carpets appearance, enhance the image of your installation and ensure continued high performance throughout its life cycle. To ensure the carpet will last longer and look better just follow the three basic rules of carpet maintenance: vacuum regularly; remove spills immediately; professionally clean as required (usually no more than once every year or two).

INSTALLATION

Vacuum the old carpet before it is removed, to help eliminate dust.  
The surface should be plain, dry and clean.  
Ensure prior to installation the carpet is completely stretched to minimise wrinkling and rippling.



TREATMENT IMO (Option)

This product can have a special treatment to comply with the Council Directive of the European Union 96/98/EC of 20 December 1996 on marine equipment.

LUSOTUFO<sup>®</sup> reserves the right to amend any technical details without prior notice.

LUSOTUFO, SA

Apartado 32 | 3889-853 Cortegaça OVR | Portugal | Telef./Phone: (+351) 256.750.500 | Fax: (+351) 256.750.504 | E-mail: lusotufu@lusotufu.pt | www.lusotufu.com

CE

EN 14041



EN 1307

# PRINTED



	<b>COPPER</b>	<b>SILVER</b>	<b>GOLD</b>	<b>PLATINUM</b>
	Heavy Commercial	General Commercial	Heavy Commercial	Heavy Commercial

Construction  
Composition

Tufted, Cut Pile  
100% Polyamide

Pile Weight	668g/m <sup>2</sup>	790g/m <sup>2</sup>	900g/m <sup>2</sup>	1.150g/m <sup>2</sup>
Total Weight	1.650g/m <sup>2</sup>	1.690g/m <sup>2</sup>	1.800g/m <sup>2</sup>	2.050g/m <sup>2</sup>
Pile Height	4,0mm	5,0mm	5,0mm	6,0mm
Total Height	6,0mm	7,5mm	7,0mm	7,7mm
N° Points/m <sup>2</sup>	316.000	189.600	169.850	201.450
Gauge	1/10"		1/10"	
Backing	75% Polyester 25% Polyamide		Textile	
Width	4m		4m	

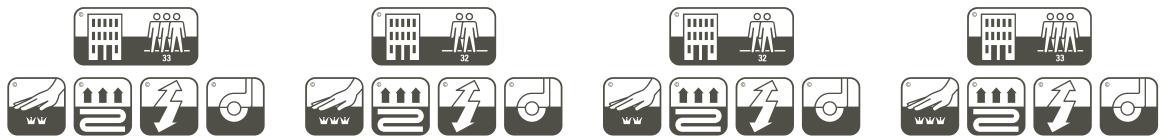
Reaction to Fire	Cfl s1			
------------------	--------	--	--	--

## MAINTENANCE

The implementation of an adequate cleaning and maintenance regime from the time of installation of your commercial carpeting, makes it possible to safeguard your carpets appearance, enhance the image of your installation and ensure continued high performance throughout its life cycle. To ensure the carpet will last longer and look better just follow the three basic rules of carpet maintenance: vacuum regularly; remove spills immediately; professionally clean as required (usually no more than once every year or two).

## INSTALLATION

Vacuum the old carpet before it is removed, to help eliminate dust.  
The surface should be plain, dry and clean.  
Ensure prior to installation the carpet is completely stretched to minimise wrinkling and rippling.



OPTIONAL	300g or 550g felt backing
----------	---------------------------

LUSOTUFO® reserves the right to amend any technical details without prior notice.

LUSOTUFO, SA

Apartado 32 | 3889-853 Cortegaça OVR | Portugal | Telef./Phone: (+351) 256.750.500 | Fax: (+351) 256.750.504 | E-mail: lusotufu@lusotufu.pt | www.lusotufu.com









**LUSOTUFO, S. A.**

**SEDE | HEADQUARTER**

APARTADO 32  
3889-853 CORTEGAÇA OVR  
PORTUGAL

TEL: +351 256 750 500  
FAX: +351 256 750 504

lusotufu@lusotufu.pt  
www.lusotufu.pt

**SHOWROOM CORTEGAÇA**

APARTADO 32  
3889-853 CORTEGAÇA OVR  
PORTUGAL

TEL: +351 256 750 500  
FAX: +351 256 750 504

**SHOWROOM LISBOA**

PARQUE EXPO  
RUA DO MAR DO NORTE  
LT 1.02.1.2 B  
1990-143 LISBOA  
PORTUGAL

TEL: +351 219 538 318/9  
FAX: +351 219 538 320

showroom.lisboa@lusotufu.pt