

iDecking
REVOLUTION



The future is now!



iDecking Revolution is brought to you by an Italian company established to innovate in the field of outdoor decking and wall claddings. Our team has carried out years of research and development with some of the world's most important architects, designers and qualified deck builders. This research has given us the opportunity to alleviate all the main issues and problems associated with traditional deck building techniques and materials, starting a true revolution in the decking field.



iDecking Revolution makes all this possible!



Our patented systems **EasyClick** and **EasyChange** simplify and revolutionize all the traditions of installing systems used all over the world.

DURO is the name of the most innovative 100% recyclable material we studied to fix all the issues tied to stability, resistance and longevity of traditional woods, which are now available via the **iDecking Revolution** offer.



Innovations@ DOMOTEX

THE WORLD OF FLOORING
HANNOVER - GERMANY

Winner of the
**International prize
for best innovations**



SELECTED INNOVATIONS
2015, 2016 & 2017



A jury of ten experts from the fields of design, architecture, interior design, the media and the property market assess the products in the respective categories according to specific criteria, including their relevance for the various target groups, technological innovation, design concept and quality.



German Design Award 2017



The German Design Award directly contributes to the overall commercial success. Prizes will only be awarded to projects that truly represent pioneering contributions to the German and international design landscape. The highly esteemed, international jury guarantees this. The German Design Award identifies and presents unique design trends: a competition that advances the design-oriented scene.

iDecking systems advantages:

NO SCREWS

iDecking does not require spacers, nails or screws, unlike traditional fastening systems and techniques, drastically reducing installation time and extending the product's lifespan.

Choosing **iDecking** allows you to enjoy walking on a totally clean, smooth deck surface.

MORE DURABILITY

Our extremely durable and resilient aluminium rail system and nylon clips provides greater strength and durability unlike the traditional wood substructure which is prone to chipping and rotting.

AVOID WATER STAGNATION

The unique design of the nylon clips of the **iDecking** systems avoid contact between the aluminium profile and the ground, allowing the substructure to be laid in any direction and letting the water flow away.

FASTEST INSTALLATION

Save time! Save money !

iDecking systems are designed to speed up deck installation times - in most cases up to 5 times faster!

EasyChange system



EasyChange is a unique system that allows you to remove and replace any board individually in any part of the floor or wall using a special **iDecking Key**. No need to use any nails, screws, drills or spacers. Its design allows the self alignment of board joints. The **EasyChange** systems helps ensure a quick, simple and trouble-free installation.



1. TURN THE KEY

How does **EasyChange** system work?

EasyChange is comprised of an aluminium substructure which comes with prespaced special rotating nylon cams. Decking boards are then locked in place with a simple turn of the **EasyKey**.



2. REMOVE AND REPLACE THE DECKING



SCAN THE CODE TO WATCH THE VIDEO



What are the highlights of **EasyChange** system?

- REMOVE AND REPLACE ANY DECKING BOARD FROM ANYWHERE IN THE FLOOR OR WALL
-
- UP TO 50% FASTER INSTALLATION COMPARED TO TRADITIONAL DECK BUILDING
-
- DOESN'T CAUSE WATER STAGNATION
-
- INCREASED STRUCTURAL INTEGRITY AND STRENGTH
-
- CAN BE USED WITH ANY TYPE OF PAVEMENT

EasyClick system



EasyClick is an innovative system which allows you to install **iDecking Revolution** boards simply using your feet. No need to use any nails, screws, drills, spacers or “obsolete” clips. The **EasyClick** system helps ensure a quick, simple and trouble free installation with the self alignment of board joints.

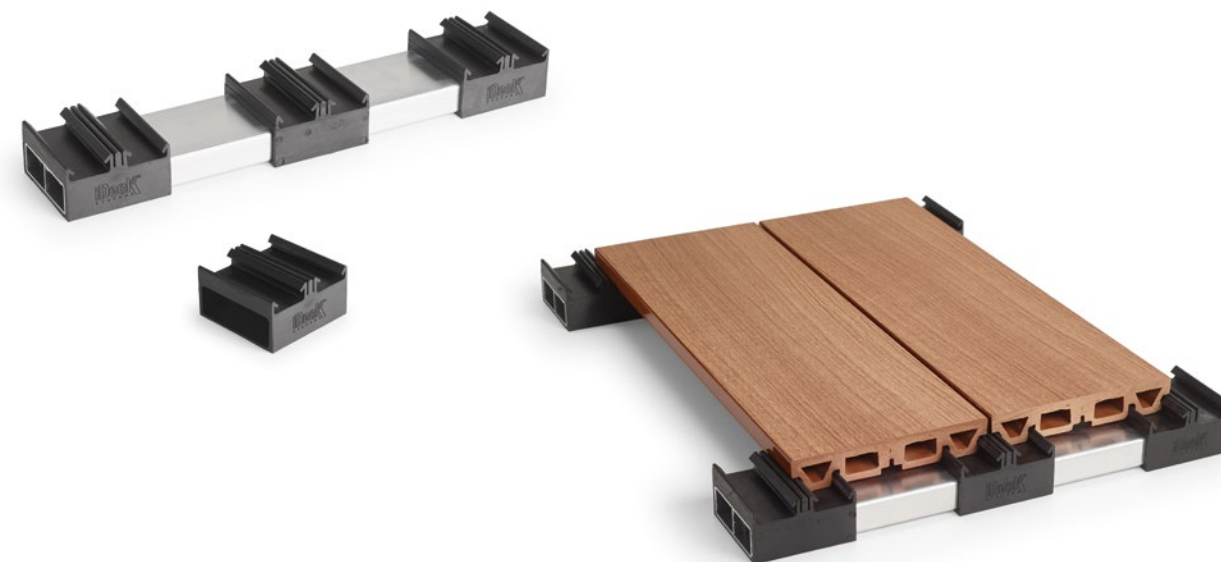


How does **EasyClick** system work?

EasyClick is an aluminium substructure rail which comes with pre-installed and pre-spaced patented **EasyClick** nylon clips. When pressing the deck boards against the nylon clip, the boards are fixed and self aligned.



SCAN THE CODE TO WATCH THE VIDEO



What are the highlights of **EasyClick** system?

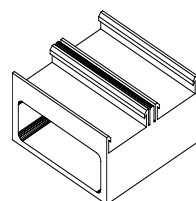
DECKING INSTALLATION UP TO 5 TIMES FASTER THAN TRADITIONAL DECK BUILDING

-
- BOARDS REQUIRE ZERO SCREWS, NAILS OR CLIPS TO INSTALL
-
- DRASTIC REDUCTION OF INSTALLATION ERRORS
-
- “EFFORTLESS” INSTALLATION
-
- DOESN'T CAUSE WATER STAGNATION
-
- INCREASED STRUCTURAL INTEGRITY AND STRENGTH
-
- SELF ALIGNING SYSTEM

Clips **EasyClick** system

CLIP A

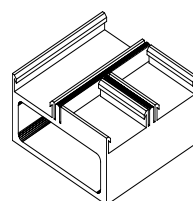
Master Clip integrated in the standard understructure. This clip joints the profiles in order to create linear design decking or wall claddings.



EXAMPLE

CLIP B

This clip allows to install 2 vertical profiles and 1 horizontal profile, allowing to invert the design way.



EXAMPLE

Clip B modules **explanation** in 3 steps

B-Clip rails allow you to easily create modules. The modules can be pre-built and transported to site for an incredibly fast installation. Ideal for temporary/seasonal outdoor areas.



SCAN THE CODE TO WATCH THE VIDEO

Fix expansion and contraction gaps with **iJack**

iJack was developed to overcome one of the biggest problems in composite decking - expansion & contraction. The **iJack** is placed between the ends of the boards and locks them together.



AVAILABLE ON **EASYCHANGE** AND **EASYCLICK DURO** BOARDS



SCAN THE CODE TO WATCH THE VIDEO



Deckbuilder's zone

Professional Deckbuilders will be extremely happy to know that **iDecking EasyClick** system won't force them on their knees all day long and will also drastically reduce installation time!

Say good bye to wasting your time aligning each decking board since our **EasyClick** system automatically aligns it for you! **EasyClick** understructure "rails" are placed every 40 cm, locking each decking board on four different points increasing the strength of the entire floor/wall structure.

Special **EasyClick** clips are also available to serve any decking design.





PRIVATE VILLA - ITALY | EasyClick System + Duro Natural



DURO

One colour,
Two finishings

FLAT

DURO is a brand new material developed by **iDecking Revolution**. The main ingredient is rice husks combined with virgin polymers. A secret formula and production process makes the material more versatile, resistant and durable.

DURO looks and feels extremely natural. It can be stained or treated for an extra level of protection, just like wood, by using any colour available from **iDecking Revolution**. **DURO** is 100% recyclable - the Eco-Friendly composite material Mother Nature herself would have created.

DURO decking can be installed both on the **EasyClick** and **EasyChange** systems. Boards are available in a choice of flat or anti-slip grooved surfaces.

ANTISLIP



ECO FRIENDLY
MADE WITH
HUSK RICE

Which are the highlights of **DURO** material?

- ECO-FRIENDLY - 100% RECYCLABLE
-
- LOW MAINTENANCE
-
- EXTREMELY STABLE AND DURABLE
-
- CAN BE TREATED AND/OR STAINED AS YOU LIKE
-
- NO SPLINTERS, BAREFOOT WALKING IS WELCOME!
-
- WEATHERPROOF & WATERPROOF
-
- UV RAY RESISTANT
-
- INSECT AND TERMITE PROOF
-
- B1 CLASS FIRE RESISTANT

DURO

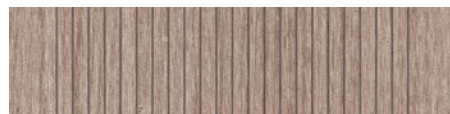
for **EasyClick**
140x25x2800mm

FLAT SURFACE



ALUMINUM UNDERSTRUCTURE
21x62 mm

ANTISLIP SURFACE



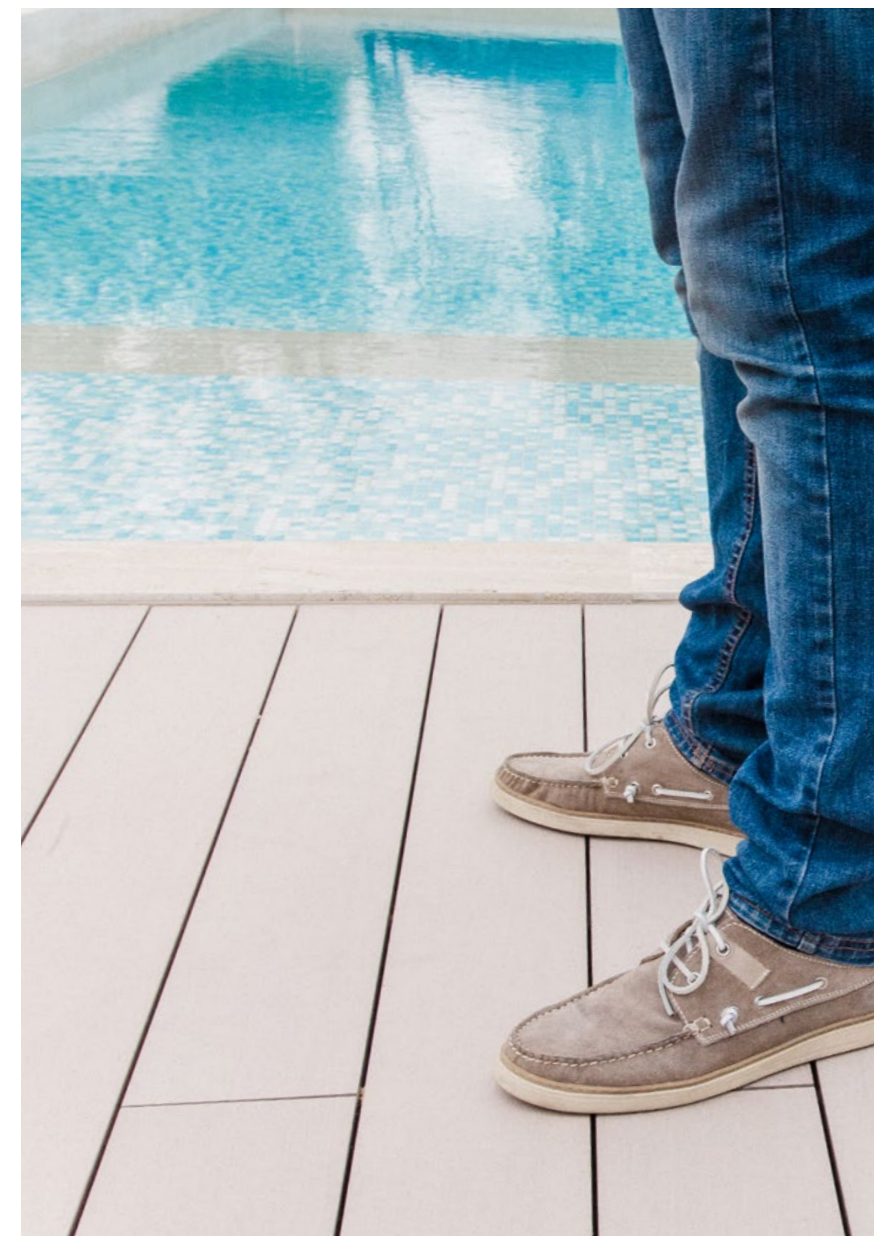
DURO

for **EasyChange**
140x24x2800mm

FLAT SURFACE



ALUMINUM UNDERSTRUCTURE
25x50 mm





WOODLAND HILLS - LOS ANGELES - USA | EasyClick System + Duro Excellence

DURO *Excellence*

The **DURO Excellence** line brings our signature composite material to the next level. It provides the most natural looking and durable coloured decking boards available. The Virgin PVC and Rice Husk compound is coloured before extrusion, this helps to guarantee colour uniformity and grain consistency all the way through each board. This makes the decking boards colour much more resistant in case of scratches and fading if compared to stained ones. **DURO Excellence** is available in seven colours. Six of them are finished with a wood grain effect making each board look unique!

DURO Excellence is available for both **EasyClick** and **EasyChange iDecking** installation systems.

Available colours

WOOD GRAIN EFFECT



MOOR OAK



DARK CHOCO



DENIM



TERRA COLOUR



SADDLE



TEAK COLOUR



IVORY WHITE



Which are the highlights of **DURO Excellence** material?

COLOURED BEFORE EXTRUSION

- WOOD GRAIN EFFECT ON SIX COLOURS
- ECO-FRIENDLY - 100% RECYCLABLE
- LOW MAINTENANCE
- EXTREMELY STABLE AND DURABLE
- NO SPLINTERS, BAREFOOT WALKING IS WELCOME!
- WEATHERPROOF & WATERPROOF
- INSECT AND TERMITE PROOF
- B1 CLASS FIRE RESISTANT

DURO Tech details

MATERIAL CHARACTERISTICS

Tensile strenght at break	35.1 N/mm ²	
Elongation at break	3%	
Thermal conductivity	015 W / (mk)	
Density	ca 1280Kg/mt	
Nail withdrawal test	ASTMD 6117	105 N
Screw withdrawal test	ASTMD 6117	312 N
Humidity behaviour	very low humidity absorption no dimensional change	
Water absorption	very low humidity absorption no dimensional change	0,26% ASTM D570
Linear expansion at 40°C Temperature		0,13%

EMISSION TEST

(TUV SINGAPORE, SEPTEMBER 2010)

Formaldehyde emission	<0,01mg per m ³ per hour	
PHTALATE EMISSION		
DEHP (Di-ethylhexylphtalate)	<0,003mg per m ³ per hour	
DBP (di-n-butylphtalate)	<0,003mg per m ³ per hour	
BBP (Benzybutylphtalate)	<0,003mg per m ³ per hour	
Fire Behaviour	B1	

RAW MATERIAL

rice husks, virgin pvc

HAMBURG UNIVERSITY TESTS

Slipperiness	CEN/TS 15676	pass
Falling mass impact resistance	EN 477	pass
Flexural properties	EN 310	pass
Creep behaviour	EN 15534	pass
Moisture resistance under cyclic test conditions	EN 321	pass
Swelling and water absorption	EN 317	pass
Linear thermal expansion	ISO 11359-2	pass



ETHERNO

100% bamboo

iDecking Revolution is a leading company in the innovation of decking systems and materials, caring deeply about new Green and Eco-Friendly solutions. This has led to the production of **ETHERNO**: the new decking material made 100% of bamboo. Bamboo grows much faster than any tree and is among the most prolific resources on earth. **ETHERNO** is a CE and FSC certified product. Through a specialized process of compression and charring, **ETHERNO** provides strength, stability and durability.

ETHERNO decks can be installed using either the **EasyChange** and **EasyClick** system.

Which are the highlights of **ETHERNO** material?

ECO-FRIENDLY - 100% MADE OF BAMBOO

-

FSC CERTIFIED PRODUCT

-

LOW MAINTENANCE

-

EXTREMELY STABLE AND DURABLE

-

NO SPLINTERS, BAREFOOT WALKING IS WELCOME!

-

WEATHERPROOF & WATERPROOF

-

NATURAL AGING AND PATINA

-

INSECT AND TERMITE PROOF

-

FLAME RETARDANT (CLASS 1)



ETHERNO

140x20x1850mm

FLAT OR ANTISLIP
SURFACE



EasyClick



ALUMINUM UNDERSTRUCTURE
21x62 mm

FLAT OR ANTISLIP
SURFACE



EasyChange



ALUMINUM UNDERSTRUCTURE
25x50 mm

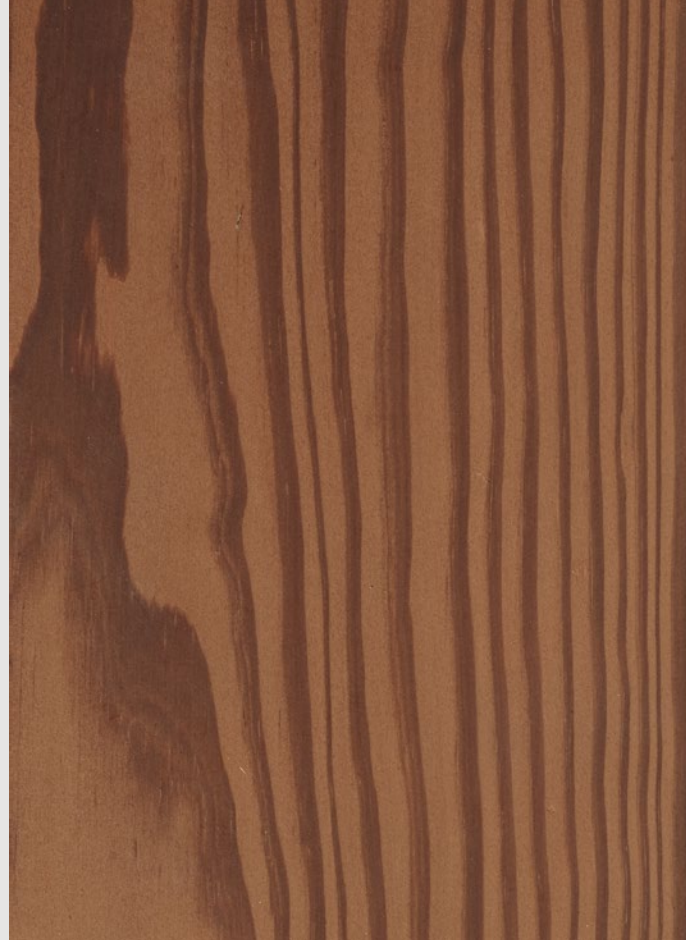
ALPINE

Thermowood

Three colours,
Two finishings

The thermowood, **ALPine**, is subjected to heat treatment at temperatures between 185 to 225° c. This process, using only steam and heat and no chemicals, results in a completely natural product. The steam is used as a membrane to avoid cracking of the wood. The effect on the properties of the wood is permanent providing durability. The wood is "toasted" a dark, homogeneous colour bringing out the the wood's natural highlights.

PINE
FLAT
NATURAL



PINE
ANTI-SLIP
NATURAL



PINE
ANTI-SLIP
WHITE



PINE
ANTI-SLIP
GREY



Which are the highlights of
ALPine?

GREATER DURABILITY

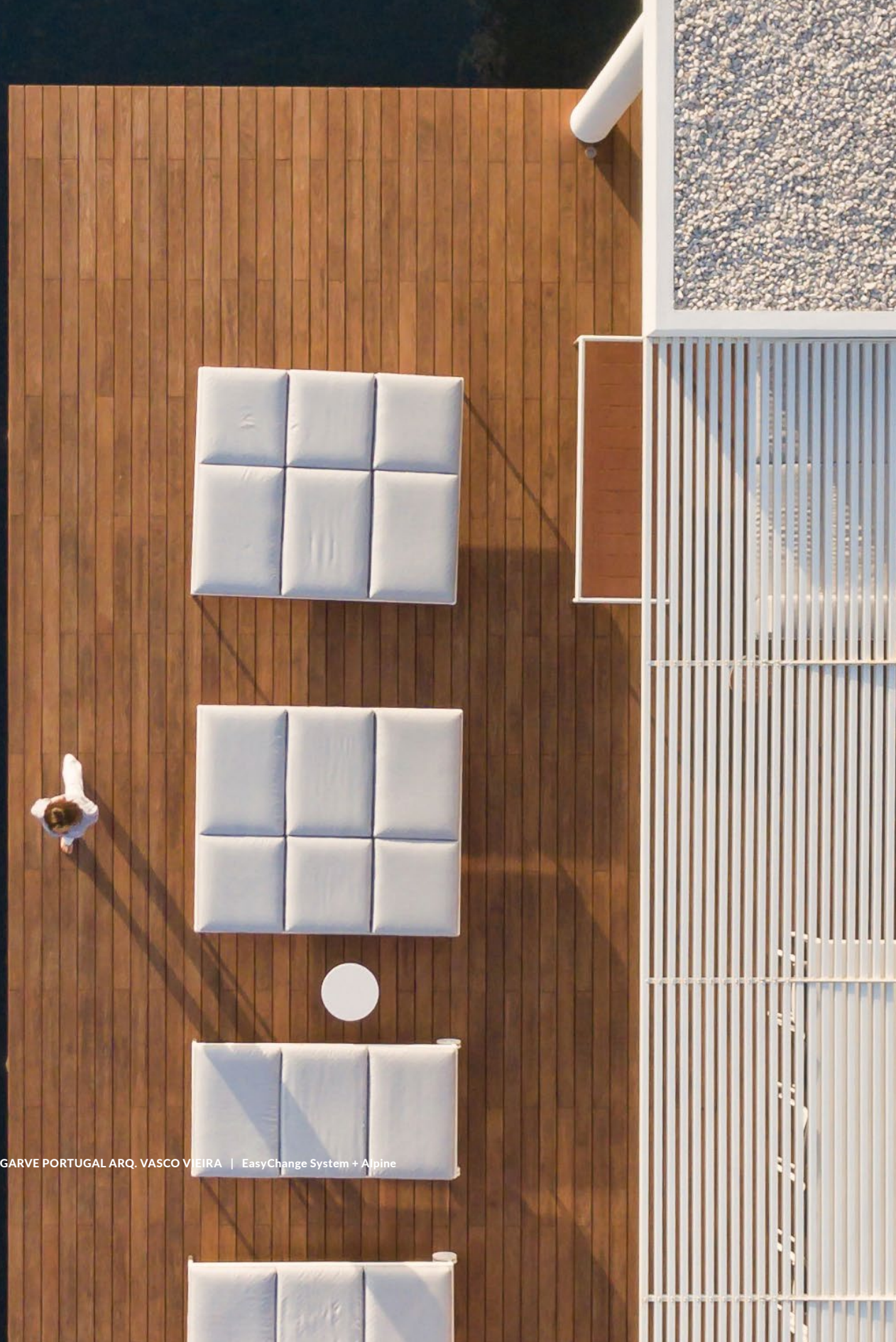
- KEEPS ITS SHAPE AND SIZE

- UNIFORMITY OF COLOUR

- 100% NATURAL PROCESS WITHOUT CHEMICALS

- HARDER SURFACE

- WOOD BECOMES LIGHTER



ALPiNE

140x26x2000mm

FLAT SURFACE



ANTISLIP SURFACE



EasyChange



ALUMINUM UNDERSTRUCTURE
25x50 mm



iDecking blades

Working with some of the best architects in the world has led us to develop a unique product in our composite range.

iDecking Revolution Blades have been developed to satisfy requests for pergolas, fences, gates, blades, fins etc. The **Blades** measures 41x200 mm and available in the same finishes as our unique **DURO** and **DURO Excellence** Composite Material.

YOU DREAM WE BUILD IT!

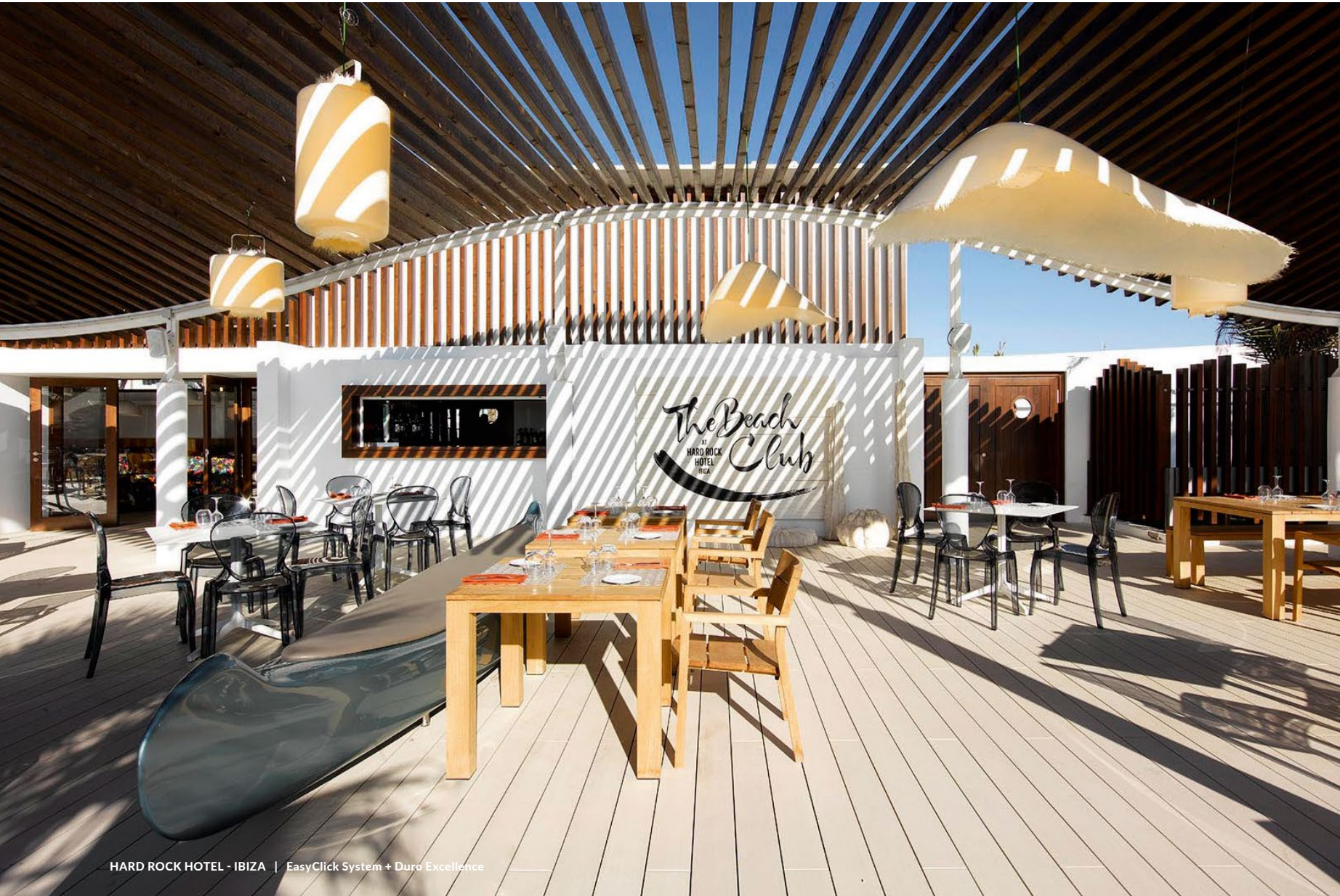


WOODLAND HILLS - LOS ANGELES - USA | EasyClick System + Duro Excellence



CASA JV ALGARVE PORTUGAL ARQ. VASCO VIEIRA | EasyChange System + Alpine





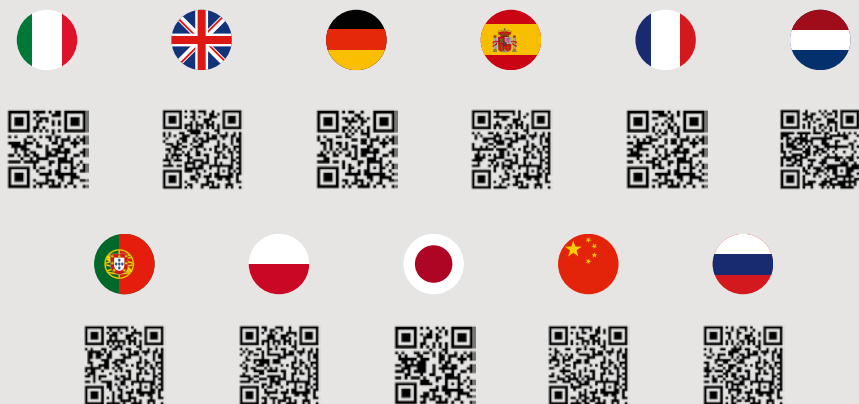
HARD ROCK HOTEL - IBIZA | EasyClick System + Duro Excellence



CASA CM ALGARVE PORTUGAL ARQ. VASCO VIEIRA | EasyChange System + Alpine



SCAN THE CODE TO DOWNLOAD THIS CATALOGUE IN YOUR LANGUAGE



OR GO TO WWW.IDECKSYSTEMS.COM/DOWNLOADS

www.idecksystems.com



IDECK SRL
S.S. CASSIA KM. 62,200 - 01019 - VETRALLA (VT) - ITALY
INFO@IDECKSYSTEMS.COM - WWW.IDECKSYSTEMS.COM

